

# Leeds Local Development Scheme

Leeds Local Development Framework



## Contact Details

**Write to:** Liz Hardwick  
Administration & Information Officer  
Leeds City Council  
Development Department  
Thoresby House, Level 3  
2 Rossington Street  
LEEDS LS2 8HD

**Telephone:** 0113 247 8075

**Email:** ldf@leeds.gov.uk

**Web:** www.leeds.gov.uk/ldf

## If you do not speak English:

If you do not speak English and need help in understanding this document, please phone: **0113 247 8092** and state the name of your language. We will then put you on hold while we contact an interpreter.

We can assist with any language and there is no charge for interpretation.

ਜੇ ਤੁਸੀਂ ਆਪਣੀ ਆਪਣੀ ਭਾਸ਼ਾ ਵਿੱਚ ਸਹਾਇਤਾ ਦੀ ਲੋੜ ਮਹਿਸੂਸ ਕਰਦੇ ਹੋ, ਤਾਂ ਕਿਰਪਾ ਕਰਕੇ 0113 247 8092 ਨੰਬਰ 'ਤੇ ਆਪਣੀ ਭਾਸ਼ਾ ਦਾ ਨਾਮ ਦੱਸੋ। ਅਸੀਂ ਤੁਹਾਨੂੰ ਇੱਕ ਵਿਚਾਰਕਾਰ ਨਾਲ ਜੋੜਾਂਗੇ ਅਤੇ ਤੁਹਾਨੂੰ ਉਸਦੀ ਸਹਾਇਤਾ ਪ੍ਰਦਾਨ ਕਰਾਂਗੇ।

如果您不会说英语，需要帮助理解这份文件，请拨打 0113 247 8092 并说明您的语言。我们将为您转接人工翻译服务。我们提供多种语言服务，且没有任何费用。

ਅੰਗਰੇਜ਼ੀ ਨਹੀਂ ਸੋਚਣ ਵਾਲੇ ਲੋਕਾਂ ਨੂੰ ਇਸ ਦਸਤਾਵੇਜ਼ ਦੀ ਸਹਾਇਤਾ ਦੀ ਲੋੜ ਮਹਿਸੂਸ ਹੋ ਸਕਦੀ ਹੈ। ਜੇ ਤੁਸੀਂ 0113 247 8092 ਨੰਬਰ 'ਤੇ ਆਪਣੀ ਭਾਸ਼ਾ ਦਾ ਨਾਮ ਦੱਸਦੇ ਹੋ, ਤਾਂ ਅਸੀਂ ਤੁਹਾਨੂੰ ਇੱਕ ਵਿਚਾਰਕਾਰ ਨਾਲ ਜੋੜਾਂਗੇ ਅਤੇ ਤੁਹਾਨੂੰ ਉਸਦੀ ਸਹਾਇਤਾ ਪ੍ਰਦਾਨ ਕਰਾਂਗੇ। ਅਸੀਂ ਸਾਰੀ ਭਾਸ਼ਾਵਾਂ ਵਿੱਚ ਸਹਾਇਤਾ ਪ੍ਰਦਾਨ ਕਰ ਸਕਦੇ ਹਾਂ ਅਤੇ ਇਸ ਲਈ ਕੋਈ ਚਾਰਜ ਨਹੀਂ ਹੈ।

अगर आपको अंग्रेजी नहीं बोलने की आवश्यकता है, तो हम आपको सहायता प्रदान कर सकते हैं। हमें 0113 247 8092 नंबर पर अपनी भाषा का नाम बताने के लिए कॉल करें। हम आपको एक व्याख्याता के साथ जोड़ेंगे और आपको उनकी सहायता प्रदान करेंगे। हम सभी भाषाओं में सहायता प्रदान कर सकते हैं और इससे कोई शुल्क नहीं है।

0113 247 8092 ਨੰਬਰ 'ਤੇ ਆਪਣੀ ਭਾਸ਼ਾ ਦਾ ਨਾਮ ਦੱਸੋ ਅਤੇ ਅਸੀਂ ਤੁਹਾਨੂੰ ਇੱਕ ਵਿਚਾਰਕਾਰ ਨਾਲ ਜੋੜਾਂਗੇ ਅਤੇ ਤੁਹਾਨੂੰ ਉਸਦੀ ਸਹਾਇਤਾ ਪ੍ਰਦਾਨ ਕਰਾਂਗੇ। ਅਸੀਂ ਸਾਰੀ ਭਾਸ਼ਾਵਾਂ ਵਿੱਚ ਸਹਾਇਤਾ ਪ੍ਰਦਾਨ ਕਰ ਸਕਦੇ ਹਾਂ ਅਤੇ ਇਸ ਲਈ ਕੋਈ ਚਾਰਜ ਨਹੀਂ ਹੈ।

This publication can also be made available in braille or audio cassette. Please call: **0113 247 8092**

# Contents

<i>Useful Terms</i>	<i>pg. 5</i>
<i>1. Introduction</i>	<i>pg. 6</i>
<i>2. Overview &amp; Supporting Statement</i>	<i>pg. 11</i>
<i>3. Schedule of Proposed Local Development Documents</i>	<i>pg. 20</i>
<i>4. Transitional Arrangements</i>	<i>pg. 27</i>
<i>5. Overall Programme</i>	<i>pg. 30</i>
<i>6. Profiles of each Local Development Document</i>	<i>pg. 35</i>
<i>Appendix 1</i>	<i>pg. 56</i>
<i>Appendix 2</i>	<i>pg. 60</i>

The Ordnance Survey mapping included within this publication is provided by Leeds City Council under licence from the Ordnance Survey in order to fulfil its public function to act as a planning authority. Persons viewing this mapping should contact Ordnance Survey where they wish to licence Ordnance Survey material for their own use



## Local Development Framework - Glossary of Terms

<b>AAP</b> <b>Area Action Plan</b>	These plans will focus upon implementation, providing an important mechanism for ensuring development of an appropriate, scale, mix and quality for key areas of opportunity, change or conservation.
<b>AMR</b> <b>Annual Monitoring Report</b>	Authorities are required to produce <b>AMRs</b> to assess the implementation of <b>LDS</b> and the extent to which policies in <b>LDDs</b> are being achieved.
<b>DPD</b> <b>Development Plan Document</b>	The Documents that a local planning authority must prepare, and which have to be subject to rigorous procedures of community involvement, consultation and independent examination. Should include the following elements: <ul style="list-style-type: none"> <li><input type="checkbox"/> Core strategy</li> <li><input type="checkbox"/> Site specific allocations of land</li> <li><input type="checkbox"/> Area Action Plans (where needed); and</li> <li><input type="checkbox"/> Proposals Map (with inset maps, where necessary)</li> </ul>
<b>LDF</b> <b>Local Development Framework</b>	The <b>LDF</b> will contain a portfolio of <b>LDDs</b> , which will provide the local planning authority's policies for meeting the community's economic, environmental and social aims for the future of their area where this affects the development of land.
<b>LDD</b> <b>Local Development Document</b>	<b>LDDs</b> will comprise of <b>DPDs</b> , <b>SPDs</b> and related to these are the <b>SCI</b> , <b>SEA/SA</b> and <b>AMR</b> .
<b>LDS</b> <b>Local Development Scheme</b>	The <b>LDS</b> sets out the programme for preparing the <b>LDDs</b> .
<b>PPS</b> <b>Planning Policy Statement</b>	Government statements of national planning policy, being phased in to supersede Planning Policy Guidance notes ( <b>PPGs</b> ).
<b>RSS</b> <b>Regional Spatial Strategy</b>	The <b>RSS</b> , incorporating a regional transport strategy, provides a spatial framework to inform the preparation of local development documents, local transport plans and regional and sub-regional strategies and programmes that have a bearing on land-use activities.
<b>SA</b> <b>Sustainability Appraisal</b>	Appraisal of the environmental, economic and social aspects of Local Development Documents ( <b>LDDs</b> ) in contributing to the achievement of Sustainable Development objectives.
<b>SCI</b> <b>Statement of Community Involvement</b>	Document explaining to stakeholders and the community, how and when they will be involved in the preparation of <b>LDF</b> and where appropriate planning applications prior to their formal submission and the steps that will be taken to facilitate this involvement.
<b>SEA</b> <b>Strategic Environmental Assessment</b>	Assessment of the environmental impacts of policies and proposals contained within the <b>LDF</b> .
<b>SPD</b> <b>Supplementary Planning Document</b>	<b>SPDs</b> are intended to elaborate upon the policy and proposals in <b>DPDs</b> but do not have their status.



# 1. Introduction

The Planning & Compulsory Purchase Act, received Royal Assent on 13th May 2004. This sets the framework for the modernisation of planning in the UK, as part of a "Plan led" system. The Act and other supporting legislation, places expectations, on local authorities to plan for sustainable communities. As part of the new system, Local Development Frameworks (LDFs) and Regional Spatial Strategies (RSS) will replace the existing system of Unitary Development Plans and Regional Planning Guidance. At a local (Leeds MD) level, the Local Development Framework provides the spatial planning framework for the use of land within the city and a key mechanism to deliver the spatial objectives of the Community Strategy (Vision for Leeds). A first task for the Council under the new planning system, is the preparation of a Local Development Scheme (LDS). This sets out a three-year programme with milestones for the preparation of Local Development Documents - documents which will comprise the Local Development Framework. The draft LDS has to be submitted to the Secretary of State through the Government Office for Yorkshire & the Humber (GOYH) for consideration, before it can be brought into effect by the Council. The Secretary of State may direct changes. The achievement of milestones will be monitored by the Secretary of State and will be an indicator of efficiency. This document is the LDS of Leeds City Council.

## Components of the new Local Development Framework

The Local Development Framework is not a single 'plan' but the name given to a portfolio of Local Development Documents, local planning authorities need to produce under the new system (for ease of reference, a Glossary of Terms for the new documents required under the new system has been included in Appendix 1 of this Local Development Scheme). This approach is intended to allow greater flexibility for local authorities in responding to changing circumstances, strengthening community and stakeholder involvement in the planning process and the achievement of economic, environmental and social objectives - at the same time, through the use of Sustainability Appraisals.


The components of the Local Development Framework, Local Development Document portfolio can be summarised as follows:

Local Development Documents are generally of two types, Development Plan Documents (DPDs) - that will need to be subject to independent testing i.e. Examination in Public by an Inspector (and have the weight of Development Plan status defined by clause 38 of the Act) and Supplementary Planning Documents (SPDs), which are not subject to independent testing and do not have Development Plan status (they should however be subject to rigorous community involvement procedures).

Development Plan Documents include:

- i) A Core Strategy (CS): to set out the vision, spatial strategy and core policies for the spatial development of the local planning authority area,
- ii) Site Specific Allocations of land,
- iii) Area Action Plans (AAPs): where needed in key area of change, and,
- iv) A Proposals Map: with inset maps as necessary.





These Development Plan Documents form the statutory Development Plan, together with the Regional Spatial Strategy (RSS).

In addition, other important documents to be included in the Local Development Framework portfolio include:

- A Statement of Community Involvement (SCI), to be prepared specifying how a local authority intends to involve stakeholders and communities in the process of producing LDDs (the SCI will also be subject to independent testing),
- A Local Development Scheme (LDS), setting out details of each of the LDDs to be produced, the timescale and arrangements for production.

Other important features of the new system include:

- New arrangements for the independent testing and examination of DPDs,
- All policies and Proposals in DPDs will be subject to Sustainability Appraisal (SA) and Strategic Environmental Assessment (SEA), to ensure they reflect sustainable development principles and environmental legislation, and,
- Local authorities will also need to produce Annual Monitoring Reports, setting out progress in terms of producing LDDs and in implementing policies. The first Annual Monitoring Report to be required under the new system is due December 2005, covering the reporting period 1 April - 2004 - 31 March 2005.

## Local Development Scheme - Scope and Purpose

The Local Development Scheme (LDS) sets out how Leeds City Council intends to produce its Local Development Framework (LDF). The Local Development Scheme serves two key roles:

- i) Under the new planning system, it provides a starting point for the local community to find out what Leeds City Council's planning policies are for the District, and sets out the current documents which form the Development Plan for Leeds Metropolitan District,

- ii) It sets out a detailed programme for the preparation of Local Development Documents over a three year period, including timetables, which will tell people when the various stages in the preparation of the Local Development Documents will be carried out.

This is the first Local Development Scheme to be prepared by Leeds City Council. It will be kept under review and amended when appropriate. A key area, which will need to be kept under review and incorporated as part of the preparation of the Local Development Framework, will be the outcome of the Unitary Development Plan Public Local Inquiry. Following the close of the Inquiry in February 2005, the Inspectors Report is anticipated in October/November 2005. Upon receipt, the City Council will need to consider the need for further Modifications prior to adoption. The work programme implications arising from this will need to be covered in the first review of the Local Development Scheme.

# The Local Development Scheme is set out as follows:

## *2. Overview & Supporting Statement*

A brief statement setting out how the LDF will be structured, how the evidence base will be managed, how monitoring and review will be undertaken.

## *3. Schedule of Proposed Local Development Documents*

A table showing each Local Development Document to be produced, its role and position in the chain of conformity.

## *4. Transitional Arrangements*

Details of policies carried forward under the Local Development Framework Transitional Arrangements.

## *5. Overall Programme*

The overall programme for the preparation of Local Development Documents, in the form of a Gantt chart setting out timetables and key milestones for the production of each document.

## *6. Profiles of each Local Development Document*

A brief profile of each Local Development Document setting out its role, geographical coverage, status, timetables for production, broad indication of resource requirements and approach to involving stakeholders.





## 2. Overview & Supporting Statement

### The Leeds Context

Leeds is the regional capital of Yorkshire and Humberside. It is extremely diverse, consisting of a main urban area, surrounded by small towns, villages and countryside. It has a diverse population, with over 8% of the overall population from minority ethnic groups increasing to 40% in some communities.


Within the Yorkshire and Humber region as a whole, Leeds' economic performance stands out with high economic growth and low unemployment. Over the last twenty years, Leeds has created more jobs than any other major city outside London. A key to the success of Leeds has been the strength and diversity of the local economy. It is still a significant centre for manufacturing, print and publishing, although the vast majority of people in Leeds work in the service sector, many in finance, legal services and the creative industries.

However, although unemployment overall is relatively low in Leeds, there are still pockets of high unemployment across the city. For example, the average ethnic minority unemployment rate is twice that of the rest of the population, while among the Bangladeshi community it is four times the overall rate. Unemployment in some inner city

wards is seven times higher than in some outer wards, although this can mask pockets of high unemployment in some streets throughout the Leeds district. Through the City Council's Corporate Plan, the Community Strategy (Vision for Leeds) and a range of major regeneration and renaissance activities, the Council and its many partners, are committed to reducing the gap between the most disadvantaged people and communities and the rest of the city.

Between 1996 and 2002, over 51,000 additional jobs were created in Leeds. This trend looks set to continue with independent projections estimating that nearly 28,000 new jobs will be created in the city over the next decade, accounting for nearly half of the additional jobs in the region. However, most of these jobs are expected to be filled by people from outside Leeds district and in-commuting therefore is expected to increase from 80,000 to over 100,000 by 2014, placing an ever greater burden on the city's transport systems. Supporting the economic competitiveness of the city, and ensuring local people can access local employment opportunities are therefore key priorities for Leeds.

Nearly a third of the city's jobs are located in the city centre, which is a significant destination for employment, shopping, tourism and cultural activities. By 2008, it is also estimated that approximately 15,000 people will live in the city centre. It is considered however that the international profile of the city centre needs to be improved and more facilities of a regional and national significance need to be provided. Improvements are also needed to make the city centre safer and welcoming to people of all ages, social and ethnic groups. Also, it is felt that the physical links and 'connectivity' of the city centre to adjacent communities needs to be improved and that the economic wealth of the city centre is not spreading to neighbouring groups and communities quickly enough.



Leeds has a good range of educational establishments from its universities and colleges through to its schools and community and family learning centres. The University of Leeds is one of the country's top universities; standards in primary schools are amongst the highest in major cities; and the city's secondary schools are improving. However, nearly a third of the working population living in Leeds have no qualifications at all and not enough young people are reaching their educational potential. Addressing such issues is therefore essential in ensuring the longer term development of the city and the establishment of sustainable communities.

## The Wider Region

There is growing recognition that Yorkshire and Humberside's longer term economic prosperity and sustainable development, is best achieved in working with a range of partners at a regional level. The concept of the "Leeds city-region" is therefore being developed, consisting of Leeds, Bradford, Calderdale, Kirklees, Wakefield, Barnsley, Craven, Harrogate, Selby and York. This idea is also emerging as part of the preparation of the new Regional Spatial Strategy, which identifies a series of 'sub' areas across the region, including the Leeds city-region.

The Leeds city-region has the potential to develop relatively quickly into a competitive city region, competing successfully with other European cities and contributing to improved economic performance. Stakeholders in the city region are now starting to recognise the advantages of closer co-operation in promoting transport improvements, high education collaboration and in financial and professional services. Leeds needs to work collaboratively with other city regions, particularly Manchester, to ensure that the north of England realises its full potential.

## The Vision for Leeds (Community Strategy)

In providing a framework to address the above issues and opportunities, the Vision for Leeds (Community Strategy), provides a vision for improving the social, economic and environmental well-being across the city. Following a period of extensive public involvement and engagement the Vision for Leeds 2004 - 2020, (prepared by the Leeds Initiative - the Local Strategic Partnership


for Leeds) has been adopted. The purpose of the Vision for Leeds is to guide the work of all the Leeds Initiative partners to make sure that the longer term aims for the city can be achieved. The Vision has the following aims:

- Going up a league as a city;
- Narrowing the gap between the most disadvantaged people and communities and the rest of the city;
- Developing Leeds' role as the regional capital.

## Local Development Scheme Preparation

Given the above pressures and opportunities in Leeds, the prospects for the wider city region and the specific aims of the Vision for Leeds, the preparation of the Local Development Framework, provides a major opportunity for the city. The above priorities not only reflect national priorities for sustainable and inclusive communities but also coincide with fundamental reforms to the Planning System. These reforms in turn allow for a flexible and positive response to meeting local needs and circumstances through a co-ordinated and integrated approach to spatial planning (including land use and transportation issues) and regeneration.

Consequently, the priorities for action within the Local Development Scheme, are intended to complement, support and to take forward, the city's identified strategic priorities. Integral to this approach also, is the desire to provide a continuity of planning policy, whilst developing new policy approaches to deal positively with the needs of both existing and future communities. Because of this, cross reference is made throughout the Local Development Scheme to the Adopted Unitary Development Plan (UDP) 'saved' policies and to the UDP Review, as well as identifying new Local Development Documents to tackle the priorities described above. In supporting, informing and directing the strategic planning priorities in Leeds and in anticipating the reforms to the planning system, the UDP Review provides a focus for regeneration and renaissance, as well as addressing a number of other key policy areas. As a result, key LDS priorities reflect the strategic direction and specific policies incorporated as part of the UDP Review, as a basis to achieve longer term objectives for regeneration and sustainable communities in the city. These objectives also reflect the Community



Strategy, in providing expression to the spatial planning aspects of the Vision for Leeds. The Local Development Documents incorporated as part of the Local Development Scheme, include a series of Development Plan and Supplementary Planning Documents, which are intended to take forward a number of spatial and thematic planning issues integral to the delivery of sustainable communities. Central to these are a number of Area Action Plans for the City Centre, the Aire Valley, East and South East Leeds (EASEL) and West Leeds. The spatial location and relationship of the proposed Area Action Plans is illustrated on **Map 1**. In achieving the longer term aspirations for the City Centre (at the hub of a competitive city region) the preparation of a City Centre AAP is considered essential and timely to tackle a series of development, regeneration and urban renaissance issues. Linked to these issues and in complementing the spatial priorities identified as part of the Vision for Leeds for urban regeneration, social inclusion and environmental improvement, Area Action Plans for the Aire Valley, East and South East Leeds and West Leeds are also identified. These areas in turn provide a number of challenges and opportunities. A longer term and strategic approach through the LDF is therefore considered to be both appropriate and necessary, in providing a co-ordinated and partnership approach to the regeneration and the development of vibrant and sustainable communities in these areas.

In providing a strategic approach to the Local Development Framework, the preparation of a Core Strategy is included as part of the LDS. The development of this document will be informed by the Adopted UDP, the UDP Review, the Vision for Leeds, the Regional Spatial Strategy and relevant national guidance. Associated with changes to national guidance and in response to regional and local circumstances, the preparation of a Minerals and Waste DPD is also proposed. As a basis to implement strategic priorities and to amplify specific policies, a number of Supplementary Planning Documents are also included to address a series of area based and thematic issues. Overall, the Local Development Scheme, details an ambitious and demanding programme. This is necessary to take forward identified city wide priorities and opportunities, as part of an integrated and co-ordinated approach, in the longer term establishment of sustainable communities.

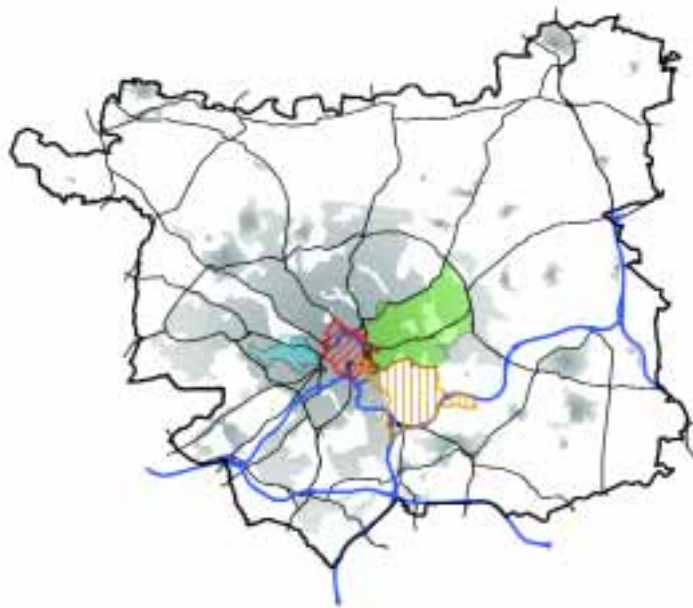
The Local Development Framework for Leeds, will comprise of the Local Development Documents

identified in the schedule included in Section 3. of this Local Development Scheme and in the individual profiles of Local Development Documents included in Section 6. These documents will be prepared as part of a phased programme, which will be subject to regular monitoring and review, as well as a formal annual review as part of the Local Development Scheme. A key aspect of the new planning system is the need to be flexible and responsive to changing circumstances as well as being proactive as part of a plan - led system. As a consequence, it is possible that there may be injections and revisions to the schedule of Local Development Documents, before the formal review of the LDS in December 2005. For example the preparation of Village Design Statements and Town Centre Strategies is largely dependent upon the capacity of communities and partners (with the support of the City Council) to undertake such work. It is possible therefore that the need for Supplementary Planning Documents to cover such areas of work may therefore arise during the course of the year. Such changes will therefore need to be considered within the context of the overall LDF programme and in discussion with stakeholders.

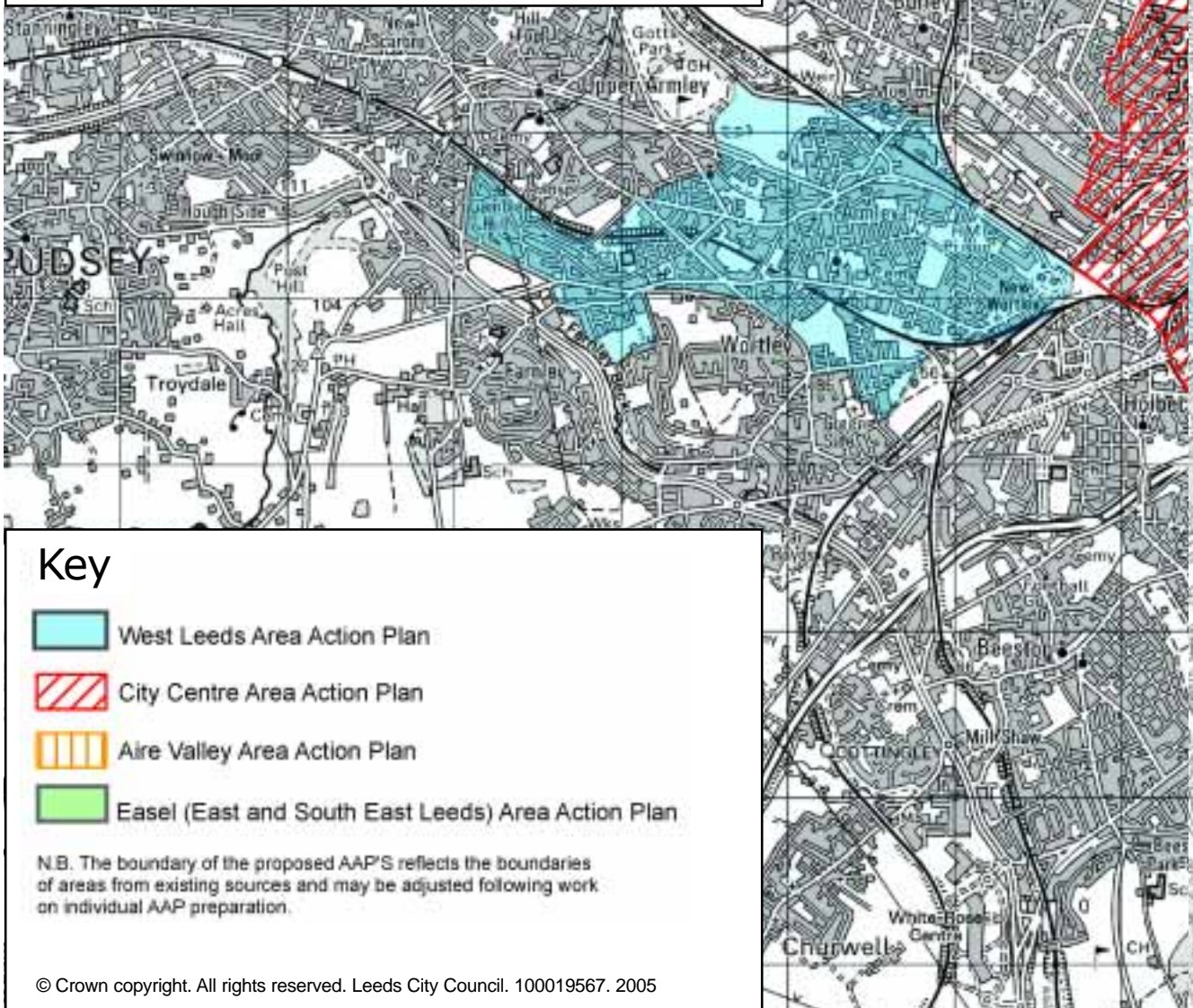
In taking this work forward as part of the overall Development Plan for the District, it is recognised that there will be a need for a combination of 'saved policies' (for three years from commencement of the Act on 28 September 2004 - under the transitional arrangements), policies to be saved (subject to the Secretary of State's agreement) for more than three years (where these are not subject to initial review as part of the first Local Development Scheme) and the need to develop and implement 'new' planning policies, in response to emerging or possibly unforeseen planning issues.

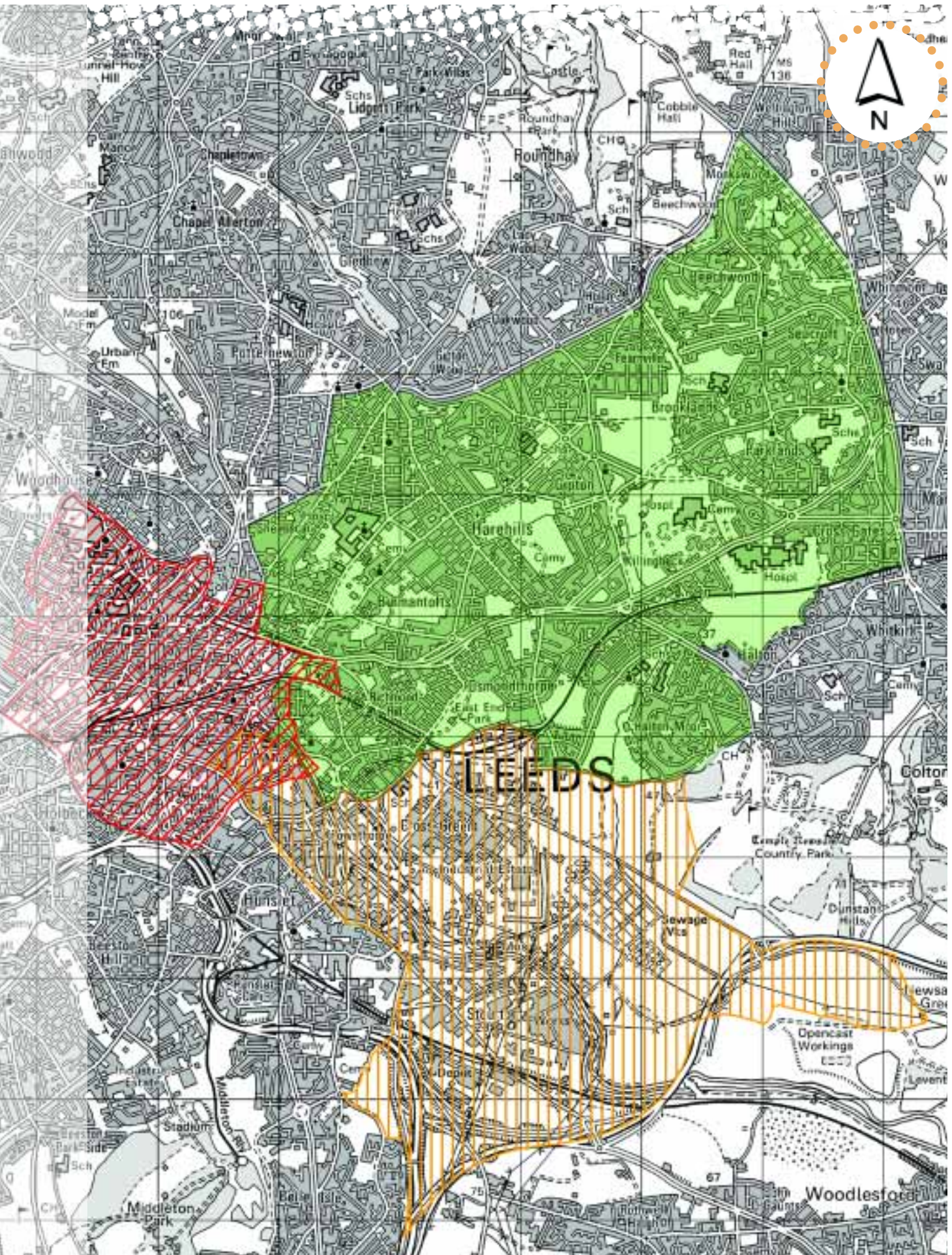
Owing to the timing of the Leeds UDP Review Public Inquiry and the likely receipt of the Inspectors Report (October/November 2005) a number of Local Development Documents will need to be finalised following the receipt of the Report. A good example of this is the Core Strategy where strategic policies for housing as part of the UDP Review will have a bearing upon the overall spatial distribution of development. Linked to the UDP Review also are implications concerning the need to prepare Supplementary Planning Documents relating to specific housing proposals. The need and timing of the preparation of such SPDs will therefore need to be reviewed in the context of the UDP Inspectors Report Recommendations and any subsequent Modifications.

# Map 1: Leeds LDS Area Action Plans



Location in Leeds MD







## Statement of Community Involvement

The Statement of Community Involvement will be prepared at the start of the Local Development Framework process, once a methodology and approach has been satisfactorily developed, agreed and adopted. In the absence of an 'adopted' SCI framework, individual Local Development Documents will be advanced through extensive public consultation and engagement and in accordance with the minimum requirements of the Local Development Framework regulations. Once completed, the Statement of Community Involvement will set out and identify the processes by which the community will be engaged in consultation on each type of document and at every stage of its preparation. The SCI will also identify how the community will engage in the consideration of major development control decisions.

In providing a framework to review previous and current consultation activity in Leeds and the requirements for consultation and public engagement as part of the LDF, the City Council appointed consultants to prepare a draft Statement of Community Involvement (completed February 2005). This will be used as a basis to develop an SCI through the formal stages of preparation, as an early priority as part of the LDF.

## Strategic Environmental Assessment (SEA) & Sustainability Appraisal (SA)

All Local Development Documents (Development Plan and Supplementary Planning Documents) will be subject to a Strategic Environmental Assessment / Sustainability Appraisal, in accordance with the LDF regulations and the European Directive 2001/42/EC. These are tools to ensure that LDF strategies and policies take into account environmental, economic and social issues as part of an integrated approach. For greater efficiency and effectiveness, the City Council intends to combine assessment and appraisal as part of one approach. In developing this work external consultants were appointed to develop a methodology to be developed and used as part of the LDF process.

## Core Strategy


The Core Strategy will be the principal document in the Local Development Framework and will contain the City Council's vision and spatial strategy for the District. The Core Strategy will be informed by the Adopted UDP, UDP Review, Vision for Leeds (Community Strategy) and the emerging Regional Spatial Strategy for Yorkshire and the Humber. The Core Strategy will need to identify the development needs for the District and their spatial distribution. In the preparation of the Core Strategy a "Key Diagram" will be used to illustrate the strategy.

## Area Action Plans

As emphasised above, a key priority for Leeds and an integral part of the Adopted UDP Review and Vision for Leeds, is the need to secure the continued renaissance and regeneration of the City and its communities. Consequently, a key priority of the Local Development Framework, are a series of Area Action Plans for specific geographical areas of Leeds. The focus of such Plans will be to promote the continued and sustainable renaissance and development of the City Centre, as the hub of the City region and the regeneration of major inner city and suburban areas of the City to promote the development of sustainable communities within these areas.

## Supplementary Planning Documents

The preparation of the Local Development Framework for Leeds includes a range of Supplementary Planning Documents, covering a range of interrelated areas, which are intended to amplify strategic, thematic, and area based planning objectives for the District. The range of issues to be covered by Supplementary Planning Documents, reflect the breadth of spatial planning issues and challenges evident in the City. These include the redevelopment of Eastgate (Harewood Quarter) within the City Centre, an Advertising Design Guide, a detailed Householder Design Guide, Highways Design Guide and Residential Guide for Community Safety to cover detailed development control issues. Whilst the LDS identifies a schedule of proposed SPDs, it is recognised that the preparation of SPDs is a dynamic process. For example, there are a number



of Village Design Statements, (led by communities); together with a range of other planning documents anticipated e.g. detailed design guidance and 'Master Plans, which are at different stages of preparation. Depending on progress, resources, particular circumstances, and timescales, it is likely that these in turn, will need to be injected into the SPD/LDS programme as they are developed and the LDS updated accordingly.

## Monitoring

The preparation of Local Development Frameworks is a continuous process, with monitoring and review key and integral aspects. As part of this process an Annual Monitoring Report will inform the Local Development Scheme each year. As part of this, both existing and where appropriate new, monitoring systems will be developed to ensure that not only the delivery of the Local Development Framework is monitored but also to ensure that the evidence upon which the Local Development Framework is based is still relevant and up to date and prepared within the context of relevant indicators. Such evidence will need to include housing land and employment information.

An Annual Monitoring Report will be prepared each year, (to be submitted to the Government Office), covering the period 1 April - 31 March. The first Annual Monitoring report under the LDF will be produced in December 2005. This will cover the period 1 April 2004 - 31 March 2005. Dependent on the stages reached in the process, the Annual Monitoring Report will report on the following areas:

- Set out how the City Council is performing against timescales and milestones set out in the Local Development Scheme,
- Provide information on the extent to which policies within Local Development Plan Documents are being achieved,
- Advise on the need to revise and update the Local Development Scheme.

## Evidence Base

Linked to monitoring and the preparation of Development Plan and Supplementary Planning Documents, an important aspect of the Local Development Framework is that individual policies


and proposals are soundly based. As part of a wide range of projects, programmes and initiatives promoted by the City Council and its many partners a wide range of technical information is available concerning environmental, economic and social issues in Leeds. The preparation of the Local Development Framework will therefore draw upon this material where appropriate and supplement this with additional survey material and technical studies where necessary and where resources permit.

In the preparation of the Adopted UDP, UDP Review and related strategies, a number of surveys, technical studies and monitoring activities have been undertaken. These include regular housing and employment land monitoring, a comprehensive Urban Capacity Study (June 2003) and an annual City Centre audit. In the preparation of the Local Development Framework, this material will be used and reviewed as necessary and supplemented by further surveys and technical studies where required in support of the production of specific Development Plan Documents.

In anticipating the evidence base requirements of the Local Development Framework, a report identifying the spatial implications of the Community Strategy (Vision for Leeds) has been undertaken (July 2003), together with baseline information and indicators as part of the Strategic Environmental Assessment /Sustainability Appraisal methodology (February 2005). This work in turn will be therefore used to inform the preparation of Local Development Documents.

## Preparation Arrangements and Resources

In reflecting the objectives of the Community Strategy (Vision for Leeds) and City Council corporate priorities, resources will be drawn from across the City Council to prepare the Local Development Framework. Close working with a range of stakeholders and partners (including the Leeds Initiative) will also be an important feature of the preparation of the Local Development Framework. To facilitate this process, and as appropriate, early consultation will be sought with stakeholders and the community. Subject to the availability of resources, the nature of technical work to be undertaken and the requirements of specific timetables, it is also likely that external consultancy support will be used to deliver key tasks and projects.



The preparation of the Local Development Framework will be led by the City Council's Development Department, primarily through the Planning and Economic Policy Service. Drawn from this service, four specific Teams (and comprising 25 officers ranging from the Head of Service, Team Leaders, Senior Planners, Planners and Administrative support staff) will have responsibilities for the LDF.

Given the scope and breadth of the LDF in Leeds (and in recognition of its corporate importance), the Planning and Economic Policy Service will be supported by resources from across the Development Department including the Strategy and Policy and Economic Services Divisions. In addition, on going and close working with a range of City Council Departments will be undertaken including Neighbourhoods and Housing, City Services and Learning and Leisure (and other Departments as necessary), to reflect the scope of the LDDs under production.

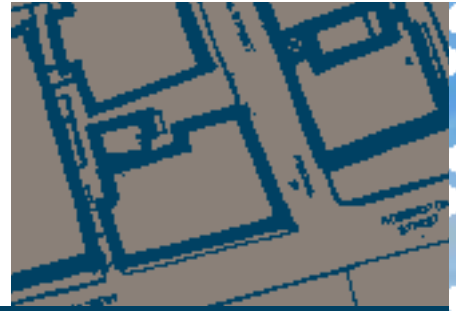
In providing technical support and a co-ordinating role within the City Council, an Officer Working Group has been established (reporting to the Economic Competitiveness and Transport Board) to oversee work in relation to the Local Development Framework. A key focus for the preparation of the Local Development Framework also, will be through a members "Development Plan Panel", with responsibilities for making recommendations to the City Council's Executive Board and Full Council (consistent with delegation arrangements and 'Executive' and 'Council' functions).

## **Risk Assessment**

The preparation of the Local Development Framework allows for a flexible approach to the preparation of a range of planning documents. The Schedule of Local Development Documents identified in Section 3 of this Local Development Scheme, covers a range of work, which in part reflects the complex spatial planning issues in Leeds. In managing this programme of work, an analysis of risks has been undertaken, together with the measures to managing them. This is set out in the following table:

# Risk Assessment

Risk	Impact	Mitigating Action
Secretary of State directs LDS amendments	<ul style="list-style-type: none"> <li>Slippage to LDS</li> </ul>	<ul style="list-style-type: none"> <li>Close liaison with Government Office on emerging LDS</li> </ul>
New national and Regional policies and guidance (Planning Policy Statements & Regional Spatial Strategy)	<ul style="list-style-type: none"> <li>Unforeseen additional work injections into LDS work programme causing slippage</li> </ul>	<ul style="list-style-type: none"> <li>Monitoring of changes to national policy.</li> <li>Active participation in regional planning agenda to respond to changes early.</li> <li>Re-evaluate priorities.</li> </ul>
Implications of UDP Review Inspectors Report	<ul style="list-style-type: none"> <li>Slippage to LDS programme due to unforeseen additional work</li> </ul>	<ul style="list-style-type: none"> <li>Monitoring of changes to national policy.</li> </ul>
Volume of work (managing potentially competing timescales and tasks, higher levels of representations than anticipated) - LDF programme too ambitious	<ul style="list-style-type: none"> <li>Programme slippage</li> </ul>	<ul style="list-style-type: none"> <li>Monitoring of progress against programme objectives and re-prioritise as necessary.</li> <li>Realistic &amp; flexible timetables.</li> <li>Use of additional resources through and corporate partnership working.</li> </ul>
Capacity of Stakeholders to respond as part of engagement/involvement activity.	<ul style="list-style-type: none"> <li>Potential programme slippage.</li> </ul>	<ul style="list-style-type: none"> <li>Early consultation with stakeholders where appropriate.</li> </ul>
Inadequate financial resources to undertake specific areas of work	<ul style="list-style-type: none"> <li>Unable to progress work.</li> <li>Potential impact on quality &amp; 'soundness' of planning documents.</li> </ul>	<ul style="list-style-type: none"> <li>Regular monitoring of budgets and costings.</li> <li>Secure additional financial resources via Planning Delivery Grant.</li> </ul>
Lack of in house skills to undertake new areas of technical work.	<ul style="list-style-type: none"> <li>Programme slippage.</li> <li>Potential impact on quality &amp; 'soundness' of planning documents.</li> </ul>	<ul style="list-style-type: none"> <li>Develop skills and competencies through training initiatives.</li> <li>Close working with partners who have the necessary skills.</li> <li>Use of external consultants - subject to resources.</li> </ul>
Staff turnover	<ul style="list-style-type: none"> <li>Potential programme slippage.</li> </ul>	<ul style="list-style-type: none"> <li>Monitoring of progress against programme objectives and re-prioritise as necessary.</li> <li>Recruit to vacant posts.</li> </ul>
Planning Inspectorate unable to meet the timescale for examination and report.	<ul style="list-style-type: none"> <li>Delay to examination /reporting.</li> <li>Key programme milestones not met.</li> </ul>	<ul style="list-style-type: none"> <li>Close liaison with Government Office &amp; Planning Inspectorate to highlight any early warning of potential issues/problems.</li> </ul>
Failure of planning documents to meet tests of soundness.	<ul style="list-style-type: none"> <li>Unable to adopt document.</li> </ul>	<ul style="list-style-type: none"> <li>Ensure documents are sound and meet technical and consultation requirements</li> </ul>
Legal Challenge	<ul style="list-style-type: none"> <li>LDD quashed.</li> <li>Impact on work programme through additional work.</li> </ul>	<ul style="list-style-type: none"> <li>Ensure LDF is compliant with Planning Act, Regulations and guidance.</li> </ul>



### 3. Schedule of Proposed Local Development Documents

The following section lists the schedule of Local Development Documents (LDDs) for Leeds



Document	Status	Brief Description	Chain of Conformity	Stakeholder & Community Engagement*	Preparation & Consultation on Issues & Options	Preparation & Consultation on Preferred Options & Proposals	Date for Submission to Secretary of State /Proposed SPD Adoption by LCC.
<b>Core Strategy</b>	<b>Development Plan Document</b>	To set out vision, objectives and district spatial development strategy (and will incorporate a Key Diagram).	Regional Spatial Strategy.	See Project Proforma	☐ Dec. 2005 - June 2006	☐ June - Oct 2006	☐ March - April 2007
<b>Area Action Plans</b>  <b>1. Leeds City Centre</b>  <b>2. Aire Valley</b>  <b>3. EASEL</b> <i>(East &amp; South East Leeds Regeneration):</i> - Harehills - Richmond Hill - Gipton - Osmondthorpe - Seacroft - Halton Moor  <b>4. West Leeds Gateway Regeneration Area.</b>	<b>Development Plan Documents</b>	To address spatial planning and regeneration issues and opportunities in a co-ordinated way.	With emerging Core Strategy, saved policies (Adopted UDP & UDP Review - once adopted) and Regional Spatial Strategy.	See Project Proforma  See Project Proforma  See Project Proforma  See Project Proforma	<b>Leeds City Centre</b> ☐ June - Jan. 2005  <b>Aire Valley</b> ☐ Aug - Dec 2005  <b>EASEL</b> ☐ Jan - Sept. 2005  <b>West Leeds</b> ☐ March - Oct. 2005	<b>Leeds City Centre</b> ☐ Feb. - March 2006  <b>Aire Valley</b> ☐ Feb. - March 2006.  <b>EASEL</b> ☐ Sept. - Nov. 2005  <b>West Leeds</b> ☐ Oct. - Dec. 2006	<b>Leeds City Centre</b> ☐ Oct. 2006.  <b>Aire Valley</b> ☐ Oct. 2006.  <b>EASEL</b> ☐ May 2006.  <b>West Leeds</b> ☐ July 2006.
<b>Statement of Community Involvement</b>	<b>Non Development Plan Document</b>	Framework & Requirements for Community Engagement on Local Development Documents and major planning applications	With regulations	See Project Proforma	☐ June - July 2005. <i>(Initial consultation with stakeholders)</i>	☐ Nov. - Dec. 2005 <i>(Formal consultation on draft SCI).</i>	☐ March 2006.

\*(To be undertaken consistent with LDF Regulations, emerging SCI & SCI once adopted).

Document	Status	Brief Description	Chain of Conformity	Stakeholder & Community Engagement <i>(To be undertaken consistent with LDF Regulations, emerging SCI &amp; SCI once adopted).</i>	Consultation on Issues & Options	Consultation on Preferred Options & Proposals	Date for Submission to Secretary of State /Proposed SPD Adoption by LCC.
<b>Minerals &amp; Waste</b>	<b>Development Plan Documents</b>	To set out specific policies, with the context of national & regional guidance.	Regional Spatial Strategy.	See Project Proforma	☐ Nov. 2007 - Jan 2008.	☐ Feb. - April 2008.	☐ Nov. 2008.
<b>Eastgate Redevelopment</b>	<b>Supplementary Planning Document</b>	To co-ordinate the redevelopment and regeneration of a key Leeds City Centre site.	With Adopted UDP.	See Project Proforma	☐ Jan. 2005	☐ May 2005	☐ July 2005
<b>Waterfront - Biodiversity Guidance</b>	<b>Supplementary Planning Document</b>	To provide specific guidance on biodiversity issues in relation to Waterfront areas.	With Core Strategy, saved policies (Adopted UDP & UDP Review - once adopted) and Regional Spatial Strategy.	See Project Proforma	☐ 2003.	☐ March 2005.	☐ June/July 2005.
<b>City Centre Public Realm Contributions</b>	<b>Supplementary Planning Document</b>	To provide specific guidance on public realm contributions arising from development proposals	Adopted UDP and Core Strategy.	See Project Proforma	☐ March - April 2005.	☐ June - July 2005	☐ Nov. 2005.
<b>Sustainability Assessments</b>	<b>Supplementary Planning Document</b>	To provide specific guidance on completing Sustainability Assessments in support of Development proposals.	With Core Strategy, saved policies ( <i>Adopted UDP &amp; UDP Review - once adopted</i> ) and Regional Spatial Strategy.	See Project Proforma	tbc	tbc	tbc

Document	Status	Brief Description	Chain of Conformity	Stakeholder & Community Engagement <i>(To be undertaken consistent with LDF Regulations, emerging SCI &amp; SCI once adopted).</i>	Consultation on Issues & Options	Consultation on Preferred Options & Proposals	Date for Submission to Secretary of State /Proposed SPD Adoption by LCC.
<b>Sustainable Design &amp; Construction</b>	<b>Supplementary Planning Document</b>	To provide specific guidance in relation to sustainable design and construction techniques and methods in relation to development proposals.	Core Strategy and saved policies <i>(Adopted UDP and UDP Review - once adopted).</i>	See Project Proforma	tbc	tbc	tbc
<b>Public Transport Improvements - Developer Contributions</b>	<b>Supplementary Planning Document</b>	To provide guidance to developers on public transport contributions arising from development proposals.	Core Strategy and saved policies <i>(Adopted UDP and UDP Review - once adopted).</i>	See Project Proforma	☐ April - June 2006.	☐ April - June 2006.	☐ Oct. 2006.
<b>Designing for Community Safety - A Residential Guide</b>	<b>Supplementary Planning Document</b>	To provide guidance to developers on the Community Safety requirements associated with development proposals.	Core Strategy and saved policies <i>(Adopted UDP and UDP Review once adopted).</i>	See Project Proforma	☐ Sept. 2005.	☐ Sept. 2005.	☐ Nov. 2006.
<b>Householder Design Guide</b>	<b>Supplementary Planning Document</b>	To provide guidance to householders and developers on the design requirements for domestic extensions.	Core Strategy and saved policies <i>(Adopted UDP and UDP Review - once adopted).</i>	See Project Proforma	☐ Sept. 2005.	☐ Sept. 2005.	☐ Jan. 2006.
<b>Highways Design Guide</b>	<b>Supplementary Planning Document</b>	To provide guidance to developers on detailed aspects of highways design	Core Strategy and saved policies <i>(Adopted UDP &amp; UDP Review - once adopted).</i>	See Project Proforma	☐ May - July 2005.	☐ May - July 2005.	☐ Dec. 2005.

Document	Status	Brief Description	Chain of Conformity	Stakeholder & Community Engagement <i>(To be undertaken consistent with LDF Regulations, emerging SCI &amp; SCI once adopted).</i>	Consultation on Issues & Options	Consultation on Preferred Options & Proposals	Date for Submission to Secretary of State /Proposed SPD Adoption by LCC.
<b>Tall Buildings Policy</b>	<b>Supplementary Planning Document</b>	To provide guidance to developers on the design and integration of high buildings.	Core Strategy and saved policies <i>(Adopted UDP &amp; UDP Review - once adopted).</i>	See Project Proforma	<input type="checkbox"/> Jan. 2005.	<input type="checkbox"/> March - May 2005.	<input type="checkbox"/> Sept. 2005.
<b>Advertising Design Guide</b>	<b>Supplementary Planning Document</b>	To set out design requirements and standards for Advertising material on land and premises.	Core Strategy and saved policies <i>(Adopted UDP &amp; UDP Review - once adopted).</i>	See Project Proforma	<input type="checkbox"/> Jan 2005.	<input type="checkbox"/> Feb. 2005.	<input type="checkbox"/> May 2005.
<b>Trees and development</b>	<b>Supplementary Planning Document</b>	To provide guidance to developers to encourage more appropriate tree planting across the district.	Core Strategy and saved policies <i>(Adopted UDP&amp; UDP Review - once adopted).</i>	See Project Proforma	<input type="checkbox"/> June - July 2005.	<input type="checkbox"/> June - July 2005.	<input type="checkbox"/> Jan. 2006.
<b>Proposals Map</b>	<b>Development Plan Document</b>	To illustrate geographically the application of DPD policies.	Adopted UDP saved policies, UDP Review, Regional Spatial Strategy and DPDs once adopted.	See para. 6.2	N/A	N/A	N/A





## 4. Transitional Arrangements

In anticipating the need to prepare Local Development Frameworks and within the context of changes to national planning policy, the City Council embarked upon an early and selective review of the Adopted UDP (2001). In managing the period of transition between the 'old' planning system and the 'new', the City Council will look to the incorporation of 'saved policies for 3 years or more (policies that the Council are seeking to save for more than 3 years are included in Appendix 2), together with the development of new policies, as part of the Core Strategy and related Local Development Documents.

These LDDs are in the LDS Programme (March 2005) to replace UDP policy on the following timetable:

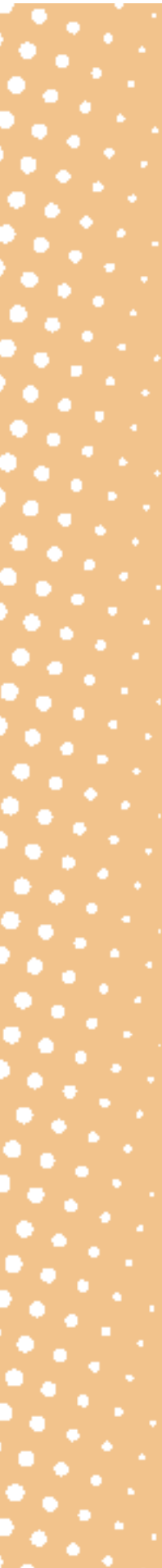
- 1. Statement of Community Involvement -**  
will replace section 4.8 of Chapter 4 of the UDP in April 2006.
- 2. Core Strategy -**  
will replace Chapter 3 and relevant repeats of Strategic Aims, Strategic Goals & Strategic Policies in Chapters 5 - 13 of the UDP in July 2008.
- 3. City Centre Area Action Plan -**  
will replace Chapter 13 of the UDP in July 2007.
- 4. Aire Valley Area Action Plan -**  
will replace sections of Chapter 15 "East Leeds" of the UDP concerning Aire Valley.
- 5. East & South East Leeds (EASEL) Area Action Plan -**  
will replace sections of Chapter 15 "East Leeds" of the UDP concerning Gipton, Harehills and Seacroft renewal & regeneration and provide new guidance covering Osmondthorpe, Richmond Hill and Halton Moor.
- 6. West Leeds Area Action Plan -**  
may replace elements (to be confirmed) of Ch 23 "West Leeds".
- 7. Proposals Map -**  
to be updated to reflect the above changes, at the same time as each DPD is adopted so as to illustrate geographically the application of the DPD policies.

The City Council will request the Government Office to allow the parts of the Adopted UDP not replaced by LDDs by 29th September 2007 to be saved until they are replaced by further LDDs. Over the next year, the City Council will draw up proposals for further LDDs, which will be inserted, into the LDS Programme from December 2005/January 2006. These will include the following:

- |   |
|---|
| <b>8. Thematic Policies</b>                     |
| <b>9. Locational Policies</b>                   |
| <b>10. Generic Development Control Policies</b> |
| <b>11. Site Specific Allocations</b>            |

A full listing of adopted UDP and proposed (Review) policies for "saving", under the transitional arrangements is, set out in Appendix 1. Further work during the course of 2005/6 will identify priorities for replacing the thematic chapters of the UDP having regard to policy drivers such as new Planning Policy Statements, the emerging regional strategy and local community strategy objectives.

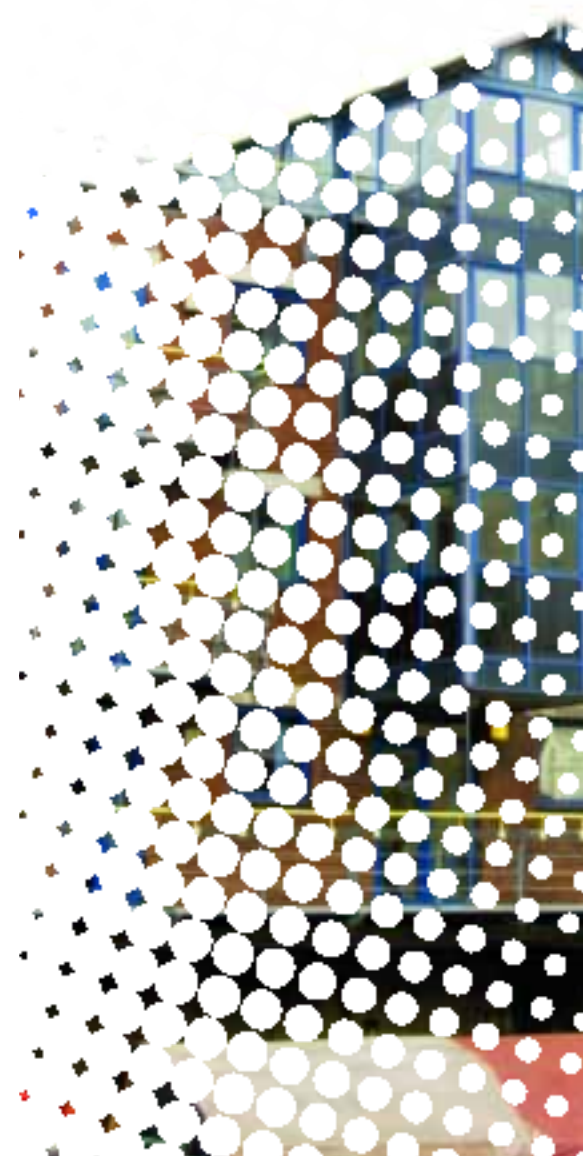
In order to maintain spatial planning and policy continuity and priorities identified via extensive community engagement activity, the City Council wishes to retain a series of Supplementary Guidance (until these are superseded by the Core Strategy and future Supplementary Planning Documents). The list of Supplementary Planning Guidance to be retained is included within Appendix 2 of the Local Development Scheme. In addition, the City Council has also produced a series of planning documents on a range of topics, which it is felt add value to customers and stakeholders in the City. Whilst it is recognised that these have no formal status under the Local Development Framework, these are listed for information and to indicate that this material is still available.





## 5. Overall Programme

The following Gantt chart sets out an initial three year programme for the preparation of the Local Development Framework, in providing a summary schedule of Local Development Documents. In recognising the transition between the UDP and the LDF, the Gantt chart also includes the Adopted UDP and UDP Review process and the timing of saved policies. For reference the Gantt chart also includes details of the preparation of the Regional Spatial Strategy. This work is being undertaken by the Yorkshire & Humber Assembly and does not formally form part of this Local Development Scheme. The preparation of the RSS of the will however have policy implications for the Leeds LDF, it is therefore useful to show the RSS timetable, as a basis to anticipate and seek to programme in any revisions to the LDS.





Granary Wharf

Universities

Bus & Coach Stations

Exchange Quarter

Shops

Royal Armouries

# Leeds Development Scheme Production Programme

Year	1												2																
Month	S	O	N	D	J	F	M	A	M	J	J	A	S	O	N	D	J	F	M	A	M	J	J	A	S	O	N	D	
<b>Development Plan Context</b>																													
Commencement of Part 2 PCP Act	X																												
Regional Spatial Strategy*													S																
Saved Policies (Adopted UDP)	A																												
UDP Review															IR						A3								
<b>Development Plan Documents</b>																													
Core Strategy																C												PO	
Area Action Plan City Centre											C									PO								S	
Area Action Plan Aire Valley												C								PO								S	
Area Action Plan EASEL						C																		S					
Area Action Plan West Leeds							C																			S			
Thematic Policies - Minerals & Waste																													
<b>Non Development Plan Document</b>																													
Statement of Community Involvement							C								FC	FC				S			PM		E		IR		A
<b>Supplementary Planning Documents</b>																													
Eastgate Redevelopment						C						FC																	
Waterfront Biodiversity Guidance							C					FC																	
City Centre Public Realm Contributions							C						FC																
Sustainability Assessments																													
Sustainable Design & Construction																													
Public Transport Improvements - Developer Contributions							C																						
Designing for Community Safety - A Residential Guide												C			FC														
Householder Design Guide													C																
Highways Design Guide														C															
Tall Buildings Policy															C														
Advertising Design Guide																C													
Trees and Development																	C												
Other SPD***																													
<b>Non Development Plan Documents</b>																													
Annual Monitoring Report																													

## Key for Production

- Pre Production
- Document preparation/consultation
- Preferred options public consultation (6 weeks)
- Submission to Secretary of State and 6 week representation period
- Examination
- Adoption
- Saved Policies
- Formal Consultation



Key Milestones shown as required in PPS12 (para 3.22)

- C - Commencement of Document Preparation
- PO - Preferred Options Public Consultation (6 weeks)
- S - Submission to Secretary of State
- PM - Pre-examination meeting
- E - Examination
- IR - Receipt of binding Inspector's Report
- A - Adoption
- FC - Formal Consultation (For SCI & SPDs)
- A3 - Anticipated date of adoption, subject to date of UDP Review Inspectors Report and timetable for modifications if required
- \* - The preparation of the Regional Spatial Strategy is the responsibility of the Regional Assembly (the Regional Planning Body). The timetable for the preparation of the RSS has been included or
- † - June 2007 anticipated date of Issue for RSS
- \*\* - To extend beyond the three year period to confirm with SoS (In context with Local Development Scheme)
- \*\*\* - A number of SPD may be injected into the programme see LDS, para 2.10.







## 6. Profiles of each Local Development Document

The following series of profiles detail the overall content and scope of Development Plan Documents, the Statement of Community Involvement, Supplementary Planning Documents and the Annual Monitoring Report. It should be noted that within the profiles for Development Plan Documents and the Statement of Community Involvement, reference to initial informal consultation is to comply with Regulation 25 (of Town & Country Planning Local Development Regulations 2004 - SI 2004, No. 2204) and the first and second formal 6 weeks consultation relate to Regulations 26 and 28 respectively.

The Proposals Map is a Development Plan Document and will be reviewed and amended to reflect the content of other DPDs as part of their preparation process.

It should be noted that individual LDD profiles have aimed to take into account the timing of Leeds City Council approval processes, through Executive Board and Full Council as appropriate in accordance with the Local Government Act (2000).

1.	Development Plan Document
<b>Document details</b>	<p><b>Core Strategy</b></p> <ul style="list-style-type: none"> <li>□ <b>Role and content:</b> Set out spatial vision and core principles for future development of Leeds; provide a key diagram depicting areas of change and constraints.</li> <li>□ <b>Chain of conformity:</b> Relevant Adopted UDP saved policies, UDP Review, Regional Spatial Strategy and provide expression for the spatial planning aspects of Vision for Leeds (Community Strategy).</li> <li>□ <b>Geographical coverage:</b> District wide - Leeds Metropolitan District (MD).</li> </ul>
<b>Timetable</b>	<p><b>Production Milestones:</b></p> <ul style="list-style-type: none"> <li>□ <b>Pre-production:</b></li> <li>□ Evidence gathering internal scoping and planning of consultation - 15 months to Development Plan Panel December 2005.</li> <li>□ <b>Production:</b></li> <li>□ Pre-Submission Consultation - engagement with stakeholders, external scoping, preparation of, issues and alternative options &amp; City Council approval of consultation documents/sustainability appraisal, - 6 months to June 2006.</li> <li>□ Formal public consultation on preferred options Sept. - October 2006 (6 weeks from from Sept 2006).</li> <li>□ Preparation of Submission Documents - 6 months to March 2007.</li> <li>□ Submission of DPD to SoS April 2007 (and commencement of 6 week representation period).</li> <li>□ <b>Examination:</b></li> <li>□ Pre-examination consideration of representations, May/June 2007.</li> <li>□ <b>Pre-examination Meeting</b> (July 2007).</li> <li>□ Examination period (Nov./Dec 2007).</li> <li>□ Receipt of Inspector's binding report - April 2008.</li> <li>□ <b>Adoption, Monitoring &amp; Review:</b></li> <li>□ Adoption and publication of Core Strategy - July 2008.</li> <li>□ Monitoring, as part of the Annual Monitoring Report and related monitoring arrangements, including the City Centre Audit. By general indicators of i) economic competitiveness (GDV), ii) socio/economic polarity, iii) attractiveness of the environment</li> </ul>
<b>Arrangements for Production</b>	<ul style="list-style-type: none"> <li>□ <b>Production process and management arrangements:</b> Preparation lead by Planning Policy Team - Development Department, with input from wide variety of Council services.</li> <li>□ <b>Resources:</b> Staff time, Access Database, Meeting rooms/halls, presentation facilities, Website space, document printing, Advertising budget.</li> <li>□ <b>Consultation:</b> to be consistent with minimum consultation requirements (contained in the LDF regulations) and Statement of Community Involvement requirements - will include i) placing written material for comment ii) placing material on Website, iii) meetings with stakeholders, iv) conferences/events, v) use of newspapers, vi) use of local radio/TV.</li> </ul>

2. (i)	Development Plan Document
<p><b>Document details</b></p>	<p><b>Area Action Plan - City Centre</b></p> <ul style="list-style-type: none"> <li>□ <b>Role and content:</b> To provide a coordinated approach to the spatial planning and if appropriate, expansion of the City Centre, ensuring that the City Centre continues to deliver economic, environmental and social objectives at the heart of the City Region.</li> <li>□ <b>Chain of Conformity:</b> Adopted UDP saved policies, UDP Review, the emerging LDF Core Strategy and the Regional Spatial Strategy, and provide expression for the spatial planning aspects of the Vision for Leeds (Community Strategy).</li> <li>□ <b>Geographical coverage:</b> Leeds City Centre.</li> </ul>
<p><b>Timetable</b></p>	<p><b>Production Milestones:</b></p> <ul style="list-style-type: none"> <li>□ <b>Pre-production:</b> <ul style="list-style-type: none"> <li>□ Initial data and evidence collection (December 2004 - February 2005).</li> <li>□ Key questions &amp; Issues Report to Development Plan Panel (March 2005).</li> </ul> </li> <li>□ <b>Production:</b> <ul style="list-style-type: none"> <li>□ Start of period of preparation, community involvement and consultation with stakeholders (June - Oct. 2005).</li> <li>□ Preparations of options &amp; City Council approval of consultation documents/sustainability appraisal (September - January 2005).</li> <li>□ Formal public consultation on preferred options (February - March 2006) (6 weeks from February 2006).</li> <li>□ Consider representations and discussions with community and stakeholders in preparation of submission DPD (March - Sept. 2006).</li> <li>□ Submission of DPD to SoS (October 2006 and commencement of 6 weeks representation period).</li> </ul> </li> <li>□ <b>Examination:</b> <ul style="list-style-type: none"> <li>□ Pre-examination consideration of representations December 2006 - January 2007).</li> <li>□ Pre-examination Meeting (February 2007).</li> <li>□ Examination period - including target date for examinations April - May 2007).</li> <li>□ Estimated receipt of Inspectors binding report (October 2007).</li> </ul> </li> <li>□ <b>Adoption, Monitoring &amp; Review:</b> <ul style="list-style-type: none"> <li>□ Adoption and publication of DPD and revised Proposals Map (December 2007).</li> <li>□ Appropriate mechanisms to be established to monitor on an annual basis. This will include the Annual Monitoring Report and related monitoring arrangements such as the City Centre Audit.</li> </ul> </li> </ul>
<p><b>Arrangements for Production</b></p>	<ul style="list-style-type: none"> <li>□ <b>Production process and management arrangements:</b> <ul style="list-style-type: none"> <li>□ Preparation and production led by Policy Team - Development Department with involvement and input from across the Development Department and key City Council Departments.</li> </ul> </li> <li>□ <b>Resources:</b> staff time, access to and acquisition of data, development of Access databases and project management software to manage the process, advertising and communications and communications budget.</li> <li>□ <b>Consultation:</b> to be consistent with minimum consultation requirements (contained in the LDF regulations) and Statement of Community Involvement requirements.</li> </ul>

2. (ii)	Development Plan Document
<p><b>Document details</b></p>	<p><b>Area Action Plan Aire Valley</b></p> <ul style="list-style-type: none"> <li>□ <b>Role and content:</b> To provide a co-ordinated approach to the sustainable regeneration of the Aire Valley Regeneration Area, including its spatial planning within the context of the city-region, compatible with the significance of the area in terms of its potential to contribute to the growth and success of the regional economy; to establish a framework for the implementation of the Strategic Vision; to ensure that the importance of the regeneration of the Aire Valley to the communities of East and South East Leeds is fully recognised in securing connectivity and linkages and to contribute to the regeneration /renaissance objectives of the City Council and the Local Strategic Partnership.</li> <li>□ <b>Chain of Conformity:</b> Adopted UDP saved policies, UDP Review, the Regional Spatial Strategy, the emerging LDF Core Strategy and provide expression for the spatial planning aspects of the Vision for Leeds (Community Strategy) and the Regional Economic Strategy.</li> <li>□ <b>Geographical coverage:</b> 1000 ha of land immediately SE of the City Centre, extending from the Royal Armouries and Clarence Dock eastwards towards the M1 (junctions 44 and 45), including the cross Green Industrial Estate, Hunslet and Stourton.</li> </ul>
<p><b>Timetable</b></p>	<p><b>Production Milestones:</b></p> <p><b>Pre-production:</b></p> <ul style="list-style-type: none"> <li>□ Data collection and evidence preparation, pre-submission consultation with stakeholders and community groups 2003 - June 2005). Preparation of issues report to Development Plans Panel July 2005.</li> </ul> <p><b>Production:</b></p> <ul style="list-style-type: none"> <li>□ Start of period of preparation, community involvement and consultation with stakeholders. Preparation of options and City Council approval of consultation documents/sustainability appraisal Aug. 2005 - Jan. 2006.</li> <li>□ Formal public consultation on preferred options Feb./March 2006 (6 weeks participation period commencing in February 2006).</li> <li>□ Consider representations and discussion with community and stakeholders in preparation of submission DPD April/Aug. 2006).</li> <li>□ Submission of DPD to Secretary of State: October 2006 (and commencement of 6 week representation period).</li> </ul> <p><b>Examination:</b></p> <ul style="list-style-type: none"> <li>□ Pre-examination consideration of representations Dec. 2006 - Feb. 2007.</li> <li>□ <b>Pre-examination Meeting</b> (March 2007).</li> <li>□ Examination period, including target date for Public Examination June - July 2007.</li> <li>□ Estimated receipt of Inspectors Report November 2007.</li> </ul> <p><b>Adoption, Monitoring &amp; Review:</b></p> <ul style="list-style-type: none"> <li>□ Adoption and publication of Proposals Map January 2008.</li> <li>□ Appropriate mechanisms to be established to monitor on an annual basis. This will include the Annual Monitoring Report and related monitoring arrangements with Departments and stakeholders as appropriate.</li> </ul>
<p><b>Arrangements for Production</b></p>	<ul style="list-style-type: none"> <li>□ <b>Preparation and production:</b> Planning &amp; Economic Policy (Development Department), in conjunction with Department of Neighbourhoods and Housing.</li> <li>□ <b>Resources:</b> staff time, access to and acquisition of data, development of Access databases and project management software, advertising, public consultation, advertising, communications and graphics production budget required.</li> <li>□ <b>Consultation:</b> to be consistent with minimum consultation requirements (contained in the LDF regulations) and Statement of Community Involvement requirements.</li> </ul>

2. (iii)	Development Plan Document
Document details	<p><b>Area Action Plan - East and South East Leeds (EASEL)*</b></p> <ul style="list-style-type: none"> <li>□ <b>Role and content:</b> To provide a co-ordinated approach to the spatial planning of neighbourhoods within East and South East Leeds Regeneration Area; to help provide a framework for the achievement of sustainable communities in this part of the city and to assist with the delivery of the regeneration /renaissance objectives of the City Council, the Local Strategic Partnership, Leeds East Homes and Leeds South East Homes.</li> <li>□ <b>Chain of Conformity:</b> Adopted UDP saved policies, the UDP Review, the emerging LDF Core Strategy, the Regional Spatial Strategy and provide expression for the spatial planning aspects of the Vision for Leeds (Community Strategy).</li> <li>□ <b>Geographical coverage:</b> The neighbourhoods and communities of Harehills, Burmantofts, Gipton, Seacroft, Halton Moor, Osmondthorpe and Richmond Hill.</li> </ul>
Timetable	<p><b>Production Milestones:</b></p> <ul style="list-style-type: none"> <li>□ <b>Pre-production:</b> <ul style="list-style-type: none"> <li>□ Data and evidence collection.</li> </ul> </li> <li>□ <b>Production:</b> <ul style="list-style-type: none"> <li>□ Start of period of preparation, community involvement and consultation with stakeholders. Consultation with stakeholders, consultation with community groups and preparation of initial options: January - September 2005.</li> <li>□ Preparation of options and City Council approval of consultation documents/sustainability appraisal May - Sept. 2005.</li> <li>□ Formal public participation on preferred options: (October - November 2005), (6 weeks commencing in October).</li> <li>□ Consider representations and discussions with community and stakeholders in preparation of submission of DPD: December 2005 - April 2006.</li> <li>□ Submission of DPD to Secretary of State: May 2006 (and commencement of 6 week representation period).</li> </ul> </li> <li>□ <b>Examination:</b> <ul style="list-style-type: none"> <li>□ Pre-examination consideration of representations: Aug. - Oct. 2006.</li> </ul> </li> <li>□ <b>Pre-examination Meeting</b> (November 2006).</li> <li>□ Examination period, including target date for examinations: February 2007.</li> <li>□ Estimated receipt of Inspectors Report: July 2007.</li> <li>□ <b>Adoption, Monitoring &amp; Review:</b> <ul style="list-style-type: none"> <li>□ Adoption and publication of Proposals Map: October 2007.</li> <li>□ Appropriate mechanisms to be established to monitor on an annual basis. This will include the Annual Monitoring Report and related monitoring arrangements with Departments and stakeholders as appropriate.</li> </ul> </li> </ul>
Arrangements for Production	<ul style="list-style-type: none"> <li>□ <b>Preparation and production:</b> Planning &amp; Economic Policy (Development Department), in conjunction with Department of Neighbourhoods and Housing, other Council Departments, Leeds East Homes and Leeds South East Homes.</li> <li>□ <b>Resources:</b> staff time, access to and acquisition of data, development of Access databases and project management software, advertising, public consultation, advertising, communications and graphics production budget required.</li> <li>□ <b>Consultation:</b> to be consistent with minimum consultation requirements (contained in the LDF regulations) and Statement of Community Involvement requirements.</li> </ul>
<p><i>* This Local Development Document Proforma current sets out a single AAP for the EASEL area. The detailed scope and partnership arrangements of EASEL are still evolving and this proforma may therefore be subject to change. A key aspect of this relates to the nature of the proposed AAP. Depending on project requirements, funding arrangements, resources and practicalities - this may result in a series of AAPs for EASEL rather than one.</i></p>	

2. (iv)	Development Plan Document
<b>Document details</b>	<p><b>Area Action Plan - West Leeds</b></p> <ul style="list-style-type: none"> <li>□ <b>Role and content:</b> To provide a co-ordinated approach to the spatial planning of neighbourhoods within the West Leeds Gateway Regeneration Area. To provide a framework for sustainable communities in this part of the city and to assist with the delivery of the regeneration/renaissance objectives of the Council, and Leeds West Homes.</li> <li>□ <b>Chain of Conformity:</b> Adopted UDP saved policies, the UDP Review, the emerging LDF Core Strategy, the Regional Spatial Strategy and provide expression for the spatial planning aspects of the Vision for Leeds (Community Strategy).</li> <li>□ <b>Geographical coverage:</b> Covering the area bounded by the Armley Gyratory &amp; the Clydes Estate to the East, Heights Estate to the West, Tong Road/Wortley Moor Road to the South and Leeds/Liverpool Canal to the North. The area includes the communities of New Wortley, Upper Wortley, Lower Armley, Armley Town Street, the Avaries and the adjacent commercial areas along Stanningley Road, Tong Road and Carr Crofts.</li> </ul>
<b>Timetable</b>	<p><b>Production Milestones:</b></p> <ul style="list-style-type: none"> <li>□ <b>Pre-production:</b></li> <li>□ Commission consultants to develop the regeneration framework. (Dec. 2004 - Feb. 2005). Data collection and evidence preparation, pre-submission consultation with stakeholders, local residents and community groups. (Feb. - March 2005).</li> <li>□ <b>Production:</b></li> <li>□ Start of period of preparation, community involvement and consultation with stakeholders, preparation of options for draft development framework (March - July 2005).</li> <li>□ Consideration of initial options and City Council approval of consultation documents/sustainability appraisal Sept. - Oct. 2005.</li> <li>□ Formal consultation on preferred options (Oct. - Dec. 2005) (6 weeks commencing in November 2005).</li> <li>□ Consider representations and discussions with communities and stakeholders in preparation of submission DPD Jan - June 2006).</li> <li>□ Submission of DPD to Secretary of State (July 2006 and commencement of 6 week representation period).</li> <li>□ <b>Examination:</b></li> <li>□ Pre-examination consideration of representations (September - November 2006).</li> <li>□ <b>Pre-examination Meeting</b> (December 2006).</li> <li>□ Examination period, including target date for examinations (March - April 2007).</li> <li>□ Estimated receipt of inspectors Report: August 2007.</li> <li>□ <b>Adoption, Monitoring &amp; Review:</b></li> <li>□ Adoption and publication of Proposals Map November 2007.</li> <li>□ Appropriate Mechanisms to be established, this will include the Annual Monitoring Report and related monitoring arrangements with Departments and stakeholders as appropriate.</li> </ul>
<b>Arrangements for Production</b>	<ul style="list-style-type: none"> <li>□ <b>Preparation and production:</b> led by Regeneration Team- West Leeds Area Management, with input from Neighbourhood and Housing, Development Department and other Council Departments, Leeds West Homes, and private sector partners.</li> <li>□ <b>Resources:</b> Staff-time, access to and acquisition of data, and project management software, advertising and communications and graphics production budget required</li> <li>□ <b>Consultation:</b> to be consistent with minimum consultation requirements (contained in the LDF regulations) and Statement of Community Involvement requirements.</li> </ul>

3.	Statement of Community Involvement
Document details	<p><b>Statement of Community Involvement</b></p> <ul style="list-style-type: none"> <li>□ <b>Role and content:</b> Set out standards for involving the community in the preparation, alteration &amp; review of all LDDs and planning applications;</li> <li>□ <b>Chain of Conformity:</b> Goes beyond the minimum consultation requirements of the T&amp;CP (LD) (E) Regs 2004</li> <li>□ <b>Geographical coverage:</b> District-wide - Leeds MD. It guides process and will need to inform consultation requirements in the preparation of different Local Development Documents.</li> </ul>
Timetable	<p><b>Production Milestones:</b></p> <ul style="list-style-type: none"> <li>□ <b>Pre-production:</b></li> <li>□ Evidence gathering via Leeds Leadership Programme Project - Sept. - Dec. 2004.</li> <li>□ Development of initial SCI methodology and report to Development Plan Panel March 2005.Appointment consultants to develop SCI Methodology Nov 2004 - Feb 2005.</li> <li>□ <b>Production:</b></li> <li>□ Finalising draft SCI April - May 2005 and informal consultation with stakeholders (June - July 2005).</li> <li>□ Revisions to SCI following informal consultation and approval of SCI for formal consultation (August - October 2005).</li> <li>□ Formal consultation on draft SCI November - December. (6 weeks commencing in November 2005).</li> <li>□ Consideration of representations on draft SCI and preparation and submission of SCI.</li> <li>□ Submission of SCI to SoS March 2006 and commencement of 6 week representation period).</li> <li>□ <b>Examination:</b></li> <li>□ Pre-examination consideration of representations April - May 2006.</li> <li>□ <b>Pre-examination Meeting</b> June 2006 (if required).</li> <li>□ Examination period July 2006 (or August 2006 subject to need for Pre-examination Meeting and the nature of representations received).</li> <li>□ Receipt of Inspector's binding report September 2006 (*or October 2006 subject to need for Pre-examination Meeting and timing of Examination, consistent with LDF Regulations).</li> <li>□ <b>Adoption, Monitoring &amp; Review:</b></li> <li>□ Adoption and publication of SCI - November 2006 (or December 2006 subject to * above).</li> <li>□ Regular review in response to changing circumstances - i.e. new emerging stakeholder groups.</li> </ul>
Arrangements for Production	<p><b>Production process and management arrangements:</b></p> <ul style="list-style-type: none"> <li>□ Initial preparation &amp; devising of methodology by external consultant. Drafting of SCI &amp; supporting papers, management of consultation and defending at public examination by Planning Policy Team - Development Department.</li> <li>□ <b>Resources:</b> Planning Delivery Grant for consultancy work, Staff time, Access Database, Meeting rooms/halls, presentation facilities, Website space, document printing, Advertising budget</li> <li>□ <b>Consultation:</b> will include i) placing written material for comment ii) placing material on website, iii) meetings with stakeholders, iv) conferences/events</li> </ul>

4.	Development Plan Document
<b>Document details</b>	<p><b>'Thematic' Policies - Minerals &amp; Waste</b></p> <ul style="list-style-type: none"> <li>□ <b>Role and content:</b> To provide thematic, spatial and site specific policies for Minerals and Waste in the District.</li> <li>□ <b>Chain of Conformity:</b> Adopted UDP saved policies, UDP Review the LDF Core Strategy, and Regional Spatial Strategy.</li> <li>□ <b>Geographical coverage:</b> District wide - Leeds MD.</li> </ul>
<b>Timetable</b>	<p><b>Production Milestones:</b></p> <ul style="list-style-type: none"> <li>□ <b>Pre-production:</b></li> <li>□ Policy review, data and evidence collection September - October 2007.</li> <li>□ <b>Production:</b></li> <li>□ Preparation of issues and options in consultation November 2007 - February 2008.</li> <li>□ Public participation on preferred options March - April 2008 (6 weeks commencing in March).</li> <li>□ Consideration of representations and discussions with communities and stakeholders in the preparation of the submission DPD (May - October 2008).</li> <li>□ Submission of DPD to SoS November 2008 (and commencement of 6 week representation period).</li> <li>□ <b>Examination:</b></li> <li>□ Representations on submitted DPD.</li> <li>□ <b>Pre-examination Meeting</b> (March 2009).</li> <li>□ Examination period and target date for examination June - August 2009.</li> <li>□ Estimated receipt of Inspectors' Report December 2009.</li> <li>□ <b>Adoption, Monitoring &amp; Review:</b></li> <li>□ Adoption and publication of any necessary changes to the Proposals Map March 2010.</li> <li>□ Appropriate mechanisms to be established to monitor on an annual basis. This will include the Annual Monitoring Report and related monitoring arrangements with Departments and stakeholders as appropriate.</li> </ul>
<b>Arrangements for Production</b>	<ul style="list-style-type: none"> <li>□ Preparation led by Sustainable Development Unit (Minerals Team) and Planning &amp; Economic Policy, in conjunction with the Department of City Services and key stakeholders as appropriate.</li> <li>□ <b>Consultation:</b> to be consistent with minimum consultation requirements (contained in the LDF regulations) and Statement of Community Involvement requirements once adopted.</li> </ul>

5.	Supplementary Planning Document
<p><b>Document details</b></p>	<p><b>Eastgate Redevelopment</b></p> <ul style="list-style-type: none"> <li>□ <b>Role and content:</b> To provide a framework to guide development of this major City Centre site to ensure it is sustainable, maximises benefits to the city, complements &amp; integrates with the city and delivers high quality urban design.</li> <li>□ <b>Chain of Conformity:</b> Adopted UDP saved policies, UDP Review, the emerging LDF Core Strategy, and Regional Spatial Strategy.</li> <li>□ <b>Geographical coverage:</b> Two main areas of land bounded by New York Rd. (A64M) to the north, Vicar Lane &amp; Harewood Street to the west, Eastgate/St Peters Street (A61) to the east, and George Street to the south</li> </ul>
<p><b>Timetable</b></p>	<p><b>Production Milestones:</b></p> <ul style="list-style-type: none"> <li>□ <b>Pre-production:</b></li> <li>□ September 2004 - October 2004. Agreed scope, content and procedures for SPD.</li> <li>□ <b>Production:</b></li> <li>□ October - December 2004. First draft SPD and Draft Scoping for accompanying Sustainability Appraisal produced for internal consultation.</li> <li>□ January 2005 Draft Scoping of Sustainability Appraisal issued formally for consultation.</li> <li>□ January - April 2005, preparation of second draft SPD &amp; Sustainability Appraisal to issue for formal consultation mid May 2005 (4-6wks).</li> <li>□ June 2005 collation of consultation responses, preparation of consultation report, amendments to draft SPD and Sustainability Appraisal.</li> <li>□ <b>Adoption, Monitoring &amp; Review:</b></li> <li>□ July 2005. Adoption and publication of SPD</li> <li>□ Monitoring and review to be carried out in accordance with guidance</li> </ul>
<p><b>Arrangements for Production</b></p>	<ul style="list-style-type: none"> <li>□ Planning Services/external consultants in consultation with Planning &amp; Economic Policy.</li> <li>□ <b>Consultation:</b> to be consistent with minimum consultation requirements (contained in the LDF regulations) and emerging Statement of Community Involvement requirements (prior to adoption).</li> </ul>

6.	Supplementary Planning Document
<p><b>Document details</b></p>	<p><b><u>Waterfront Biodiversity Guidance</u></b></p> <ul style="list-style-type: none"> <li>□ <b>Role and content:</b> To provide a framework to inform, guide and assess new development at waterfront locations to ensure that biodiversity issues are fully considered and addressed.</li> <li>□ <b>Chain of Conformity:</b> Adopted UDP saved policies, UDP Review and Regional Spatial Strategy.</li> <li>□ <b>Geographical coverage:</b> City wide along river and canal corridors.</li> </ul>
<p><b>Timetable</b></p>	<p><b>Production Milestones:</b></p> <ul style="list-style-type: none"> <li>□ <b>Pre-production:</b></li> <li>□ Partnership group comprising representatives from English Nature, Environment Agency, Yorkshire Wildlife Trust, British Waterways and LCC have been involved with development of the document. Habitat survey carried out along City Centre waterways in 2003.</li> <li>□ <b>Production:</b></li> <li>□ Draft document/sustainability appraisal issued for initial public consultation March 2005.</li> <li>□ Consideration of consultation responses April/May 2005.</li> <li>□ <b>Adoption, Monitoring &amp; Review:</b></li> <li>□ Adoption and publication of SPD June/July 2005.</li> <li>□ Annual monitoring with 3 yearly review.</li> </ul>
<p><b>Arrangements for Production</b></p>	<p><b>Production process and management arrangements:</b></p> <ul style="list-style-type: none"> <li>□ Partnership group led by the City Council</li> <li>□ Environment Agency has contributed £2,000 towards preparation and printing of draft and final documents. Any additional resources to be provided by Sustainable Development Unit - Development Department.</li> <li>□ <b>Consultation:</b> to be consistent with minimum consultation requirements (contained in the LDF regulations) and Statement of Community Involvement requirements and consistent with emerging Strategic Environmental Assessment/Sustainability Appraisal requirements.</li> </ul>

7.	Supplementary Planning Document
<b>Document details</b>	<p><b>City Centre Public Realm Contributions</b></p> <ul style="list-style-type: none"> <li>□ <b>Role and content:</b> Approach methodology and rationale to securing Section 106 contributions to provide for City Centre Public Realm Improvements.</li> <li>□ <b>Chain of Conformity:</b> Accords with Central Government Circular 1/97 and developing national legislation, good practice guidance, Adopted UDP saved policies, UDP Review, and emerging LDF Core Strategy.</li> <li>□ <b>Geographical coverage:</b> Leeds City Centre (AUDP boundary) and any area, which may subsequently form part of the City Centre.</li> </ul>
<b>Timetable</b>	<p><b>Production Milestones:</b></p> <ul style="list-style-type: none"> <li>□ <b>Pre-production:</b></li> <li>□ November 2004 - December 2004. Evidence gathering and research.</li> <li>□ <b>Production:</b></li> <li>□ Develop Options: January 2005 - February 2005. Assess scope to progress against evolving national legislation. Progress reliant on Planning Gain reform. Draft Circular issued November 2005.</li> <li>□ Stakeholder and community consultation: March - April 2005. Progress within context of progress on national legislation on Planning Gain.</li> <li>□ Assess and evaluate consultation responses: April - May 2005.</li> <li>□ Prepare Draft SPD and carry out Sustainability Appraisal - produce report on consultation responses: May - June 2005.</li> <li>□ Draft SPD, Sustainability Appraisal Report &amp; Consultation Statement issued for Public Consultation: June - July 2005 (6 weeks).</li> <li>□ Consideration of consultation responses: August - September 2005 (8 weeks).</li> <li>□ Finalise SPD: October 2005 (4 weeks).</li> <li>□ <b>Adoption, Monitoring &amp; Review:</b></li> <li>□ November 2005. Access database required for the recording and monitoring of Section 106 contributions. Financial controls need to be in place.</li> </ul>
<b>Arrangements for Production</b>	<p><b>Production process and management arrangements:</b></p> <ul style="list-style-type: none"> <li>□ Policy Team - Development Department to lead on production with involvement from Central Area Team (Planning Services), City Centre Management, Sustainable Development Unit, Civic Architect, Legal Services and Finance Section.</li> <li>□ <b>Resources:</b> Staff time research and production, use of database and project management software, technical expertise in undertaking Sustainability Appraisal.</li> <li>□ <b>Consultation:</b> to be consistent with minimum consultation requirements (contained in the LDF regulations) and Statement of Community Involvement requirements and stakeholders to be identified via City Centre Management &amp; Leeds Initiative. Clear accountable and audit system needs to be in place, consistent with policy and operational requirements.</li> </ul>

8.	Supplementary Planning Document
<b>Document details</b>	<p><b><u>Sustainability Assessments</u></b></p> <ul style="list-style-type: none"> <li>□ <b>Role and content:</b> Provide detailed guidance on the need for sustainability assessments in the submission of major applications for development.</li> <li>□ <b>Chain of Conformity:</b> Adopted UDP saved policies, UDP Review and emerging LDF Core Strategy.</li> <li>□ <b>Geographical coverage:</b> District wide - Leeds MD</li> </ul>
<b>Timetable</b>	<ul style="list-style-type: none"> <li>□ <b>TBC following receipt of UDP Review Inspectors Report.</b></li> </ul>
<b>Arrangements for Production</b>	<ul style="list-style-type: none"> <li>□ <b>TBC following receipt of UDP Review Inspectors Report.</b></li> <li>□ <b>Consultation:</b> to be consistent with minimum consultation requirements (contained in the LDF regulations) and Statement of Community Involvement requirements.</li> </ul>
<b>Post Production</b>	<ul style="list-style-type: none"> <li>□ <b>TBC following receipt of UDP Review Inspectors Report.</b></li> </ul>

9.	Supplementary Planning Document
<p><b>Document details</b></p>	<p><b><u>Sustainable Design &amp; Construction</u></b></p> <ul style="list-style-type: none"> <li>□ <b>Role and content:</b> ATo replace existing Supplementary Planning Guidance (Sustainable Development Design Guide 1998) in providing guidance to developers to encourage more sustainable buildings</li> <li>□ <b>Chain of Conformity:</b> With Adopted UDP saved policies, UDP Review and emerging LDF Core Strategy.</li> <li>□ <b>Geographical coverage:</b> District wide - Leeds MD.</li> </ul>
<p><b>Timetable</b></p>	<p><b>Production Milestones:</b></p> <ul style="list-style-type: none"> <li>□ <b>Pre-production:</b></li> <li>□ <b>Production:</b></li> <li>□ <b>Adoption, Monitoring &amp; Review:</b></li> <li>□ <b>TBC following receipt of UDP Inspectors Report.</b></li> </ul>
<p><b>Arrangements for Production</b></p>	<ul style="list-style-type: none"> <li>□ <b>TBC following receipt of UDP Inspectors Report.</b></li> <li>□ <b>Consultation:</b> to be consistent with minimum consultation requirements (contained in the LDF regulations) and Statement of Community Involvement requirements.</li> </ul>

10.	Supplementary Planning Document
<b>Document details</b>	<p><b>Public Transport Improvements &amp; Developer Contributions</b></p> <ul style="list-style-type: none"> <li>□ <b>Role and content:</b> Provide guidance on how developer contributions will be required to ensure new development is adequately served and made accessible by public transport.</li> <li>□ <b>Chain of Conformity:</b> Adopted UDP saved policies, UDP Review, emerging LDF Core Strategy and Regional Spatial Strategy.</li> <li>□ <b>Geographical coverage:</b> District wide - Leeds MD</li> </ul>
<b>Timetable</b>	<p><b>Production Milestones:</b></p> <ul style="list-style-type: none"> <li>□ <b>Pre-production:</b></li> <li>□ Start of period of preparation: June 2002 (input from internal departments and external specific consultation bodies).</li> <li>□ Stakeholder &amp; Community engagement: Jan - Feb 2003.</li> <li>□ Assessment of responses: Feb 2003 - Nov 2004.</li> <li>□ <b>Production:</b></li> <li>□ Prepare Draft SPD/Sustainability Appraisal Report &amp; Consultation Statement: Dec 2004 - Mar 2006 (dependent on guidance on Planning Gain reform - draft circular anticipated early 2005).</li> <li>□ Draft SPD, Sustainability Appraisal Report &amp; Consultation Statement issued for Public Consultation: April - June 2006 (6 weeks)</li> <li>□ LPA consideration of consultation responses: August/September 2006 (8 weeks)</li> <li>□ Finalise SPD: October 2006 (4 weeks)</li> <li>□ <b>Adoption, Monitoring &amp; Review:</b></li> <li>□ Adoption and publication of SPD: November 2006.</li> <li>□ Monitoring and review mechanisms (including contributions to the AMR): No of consultations; No of applications approved where contributions acquired; Total amount of contributions acquired (breakdown by Land Use); monitor and review accordingly cost of transport schemes specified in SPD; monitor and review accordingly completion of transport schemes specified in SPD; monitor and review accordingly introduction of new transport schemes specified in the Local Transport Plan. Produce quarterly reports and feed in to Annual Monitoring Report.</li> </ul>
<b>Arrangements for Production</b>	<p><b>Production process and management arrangements:</b></p> <ul style="list-style-type: none"> <li>□ Preparation lead by Policy Team with input from wide variety of Council services</li> <li>□ <b>Resources required to produce the LDD:</b> Staff time from several sections, MS Access database, meeting rooms/halls, presentation facilities, Website space, document printing, advertising budget.</li> <li>□ <b>Consultation:</b> to be consistent with minimum consultation requirements (contained in the LDF regulations) and Statement of Community Involvement requirements.</li> </ul>

11.	Supplementary Planning Document
<b>Document details</b>	<p><b>Designing for Community Safety - A Residential guide</b></p> <ul style="list-style-type: none"> <li>□ <b>Role and content:</b> To give guidance on how good design and physical security can compliment the environment and create safe, sustainable communities and to reinforce and expand upon community safety principles as set out in the Neighbourhoods for Living SPG.</li> <li>□ <b>Chain of Conformity:</b> Adopted UDP Saved policies, UDP Review and emerging LDF Core Strategy.</li> <li>□ <b>Geographical coverage:</b> District wide - Leeds MD</li> </ul>
<b>Timetable</b>	<p><b>Production Milestones:</b></p> <ul style="list-style-type: none"> <li>□ <b>Pre-production:</b></li> <li>□ Evidence gathering - Sept. 2004 - April 2005.</li> <li>□ <b>Production:</b></li> <li>□ Start of period of preparation, community involvement and consultation - April 2005.</li> <li>□ Draft SPD/sustainability appraisal issued for public consultation - May 2005.</li> <li>□ Consideration of consultation responses - by September 2005.</li> <li>□ <b>Adoption, Monitoring &amp; Review:</b></li> <li>□ Adoption and publication of SPD - November 2005.</li> <li>□ Customer and staff satisfaction with the document.</li> <li>□ Robustness of document through appeal decisions.</li> </ul>
<b>Arrangements for Production</b>	<p><b>Production process and management arrangements:</b></p> <ul style="list-style-type: none"> <li>□ to be project managed within Planning Services</li> <li>□ <b>Resources required to produce the LDD:</b> including specifying resources committed from external stakeholders - dedicated project manager, draft document already produced, graphics and publishing costs (to be delivered within existing budget)</li> <li>□ Approach to involving stakeholders and the community - customer consultation and through customer focus group</li> <li>□ <b>Consultation:</b> to be consistent with minimum consultation requirements (contained in the LDF regulations) and Statement of Community Involvement requirements.</li> </ul>

12.	Supplementary Planning Document
<b>Document details</b>	<p><b><u>Householder Design Guide</u></b></p> <ul style="list-style-type: none"> <li>□ <b>Role and content:</b> To give guidance on the design of householder proposals.</li> <li>□ <b>Chain of Conformity:</b> Adopted UDP saved policies, UDP Review and emerging LDF Core Strategy.</li> <li>□ <b>Geographical coverage:</b> District wide - Leeds MD.</li> </ul>
<b>Timetable</b>	<p><b>Production Milestones:</b></p> <ul style="list-style-type: none"> <li>□ <b>Pre-production:</b></li> <li>□ Evidence gathering, Sept. 2004 - April 2005.</li> <li>□ <b>Production:</b></li> <li>□ Start of period of preparation, community involvement and consultation - April 2005.</li> <li>□ Draft SPD/sustainability appraisal issued for public consultation - September 2005.</li> <li>□ LPA consideration of consultation responses - November 2005.</li> <li>□ <b>Adoption, Monitoring &amp; Review:</b></li> <li>□ Adoption and publication of SPD - January 2006.</li> <li>□ Customer and staff satisfaction with the document.</li> <li>□ Robustness of document through appeal decisions.</li> </ul>
<b>Arrangements for Production</b>	<p><b>Production process and management arrangements:</b></p> <ul style="list-style-type: none"> <li>□ to be project managed within Planning Services, assisted by Sustainable Development Unit.</li> <li>□ <b>Resources required to produce the LDD:</b> including specifying resources committed from external stakeholders - dedicated project manager, design advice, graphics and publishing costs.</li> <li>□ Approach to involving stakeholders and the community - customer consultation and through customer focus group</li> <li>□ <b>Consultation:</b> to be consistent with minimum consultation requirements (contained in the LDF regulations) and Statement of Community Involvement requirements.</li> </ul>

13.	Supplementary Planning Document
<p><b>Document details</b></p>	<p><b>Highways Design Guide</b></p> <ul style="list-style-type: none"> <li>□ <b>Role and content:</b> Set out standards for the provision of highways to serve both residential and industrial developments</li> <li>□ <b>Chain of Conformity:</b> Adopted UDP saved policies, UDP Review and emerging LDF Core Strategy.</li> <li>□ <b>Geographical coverage:</b> District wide - Leeds MD.</li> </ul>
<p><b>Timetable</b></p>	<p><b>Production Milestones:</b></p> <ul style="list-style-type: none"> <li>□ <b>Pre-production:</b></li> <li>□ Evidence gathering Sept. 2004 - April 2005.</li> <li>□ <b>Production:</b></li> <li>□ Draft SPD/sustainability appraisal issued for public consultation (May-July 2005).</li> <li>□ Consideration of consultation responses - August/September 2005.</li> <li>□ <b>Adoption, Monitoring &amp; Review:</b></li> <li>□ Adoption and Publication - December 2005.</li> <li>□ Annual Review.</li> </ul>
<p><b>Arrangements for Production</b></p>	<p><b>Production process and management arrangements:</b></p> <ul style="list-style-type: none"> <li>□ Production to be led by Highways Development Services</li> <li>□ <b>Resources:</b> To be confirmed</li> <li>□ <b>Consultation:</b> to be consistent with minimum consultation requirements (contained in the LDF regulations) and Statement of Community Involvement requirements.</li> </ul>

14.	Supplementary Planning Document
<b>Document details</b>	<p><b>Tall Buildings Policy</b></p> <ul style="list-style-type: none"> <li>□ <b>Role and content:</b> To provide guidance for developers and designers regarding the design of tall buildings.</li> <li>□ <b>Chain of Conformity:</b> Adopted UDP, UDP Review and emerging LDF Core Strategy.</li> <li>□ <b>Geographical coverage:</b> District wide - Leeds MD.</li> </ul>
<b>Timetable</b>	<p><b>Production Milestones:</b></p> <ul style="list-style-type: none"> <li>□ <b>Pre-production:</b></li> <li>□ Evidence gathering and research (literature and Parliamentary reviews, and Leeds specific info including visual surveys), Sept. 2004 - April 2005.</li> <li>□ <b>Production:</b></li> <li>□ First written draft/guide for testing November 2004.</li> <li>□ Internal professional review and consultation (including Urban Renaissance) Mid to end November 2004.</li> <li>□ External professional/ public structured workshop event January 2005.</li> <li>□ Start of period of preparation, community involvement and consultation: March 2005.</li> <li>□ Draft SPD/sustainability appraisal issued for public consultation (May 2005).</li> <li>□ Complete and review consultation responses: July 2005.</li> <li>□ <b>Adoption, Monitoring &amp; Review:</b></li> <li>□ Adoption and publication of SPD: End of September 2005.</li> <li>□ Annual monitoring and review every 3 years</li> </ul>
<b>Arrangements for Production</b>	<p><b>Production process and management arrangements:</b></p> <ul style="list-style-type: none"> <li>□ Project led by Sustainable Development Unit and across Development Department.</li> <li>□ <b>Consultation:</b> to be consistent with minimum consultation requirements (contained in the LDF regulations) and Statement of Community Involvement requirements.</li> </ul>

15.	Supplementary Planning Document
<b>Document details</b>	<p><b>Advertising Design Guide</b></p> <ul style="list-style-type: none"> <li>□ <b>Role and content:</b> Guide type and quantity of advertising.</li> <li>□ <b>Chain of Conformity:</b> Adopted UDP saved policies, UDP Review and emerging LDF Core Strategy.</li> <li>□ <b>Geographical coverage:</b> District wide - Leeds MD.</li> </ul>
<b>Timetable</b>	<p><b>Production Milestones:</b></p> <ul style="list-style-type: none"> <li>□ <b>Pre-production:</b></li> <li>□ Evidence gathering Sept. 2004 - April 2005.</li> <li>□ <b>Production:</b></li> <li>□ Production of initial draft completed, to be subject of review by January 2005.</li> <li>□ Start of period of preparation, community involvement and consultation, January 2005.</li> <li>□ Draft SPD/sustainability appraisal - as appropriate, issued for public consultation February 2005.</li> <li>□ Consideration of consultation responses, April 2005.</li> <li>□ <b>Adoption, Monitoring &amp; Review:</b></li> <li>□ Adoption and publication of SPD, May 2005.</li> <li>□ Annual monitoring and review every 3 years.</li> </ul>
<b>Arrangements for Production</b>	<p><b>Production process and management arrangements:</b></p> <ul style="list-style-type: none"> <li>□ Project to be led by Sustainable Development Unit.</li> <li>□ Estimated 3 weeks of officer time to revise draft plus 3 days for Graphics production.</li> <li>□ <b>Consultation:</b> to be consistent with minimum consultation requirements (contained in the LDF regulations) and Statement of Community Involvement requirements. Pilot consultation in conjunction with Statement of Community Involvement development.</li> </ul>

16.	Supplementary Planning Document
<p><b>Document details</b></p>	<p><b><u>Trees and development</u></b></p> <ul style="list-style-type: none"> <li>□ <b>Role and content:</b> To provide guidance on tree retention, protection and new planting both in the city centre and across the district.</li> <li>□ <b>Chain of Conformity:</b> Adopted UDP Policies saved policies, UDP Review and emerging LDF Core Strategy).</li> <li>□ <b>Geographical coverage:</b> District wide - Leeds MD.</li> </ul>
<p><b>Timetable</b></p>	<p><b>Production Milestones:</b></p> <ul style="list-style-type: none"> <li>□ <b>Pre-production:</b></li> <li>□ Initial preparatory work undertaken as part of City Centre Urban Design Strategy, Neighbourhoods for Living Supplementary Planning Guidance and City Centre Arboretum project.</li> <li>□ Further evidence gathering Sept. 2004 - April 2005.</li> <li>□ <b>Production:</b></li> <li>□ Complete preparation, initial community involvement and consultation April 2005.</li> <li>□ Draft SPD/sustainability appraisal issued for formal public consultation June - July 2005.</li> <li>□ Consideration of consultation responses by October 2005.</li> <li>□ <b>Adoption, Monitoring &amp; Review:</b></li> <li>□ Adopt and publish revised SPD by January 2006.</li> <li>□ Annual monitoring and review every 3 years.</li> </ul>
<p><b>Arrangements for Production</b></p>	<p><b>Production process and management arrangements:</b></p> <ul style="list-style-type: none"> <li>□ Project to be led by Sustainable Development Unit, Development Department.</li> <li>□ <b>Consultation:</b> to be consistent with minimum consultation requirements (contained in the LDF regulations) and Statement of Community Involvement requirements.</li> </ul>

17.	Annual Monitoring Report
<b>Document details</b>	<p><b>Annual Monitoring Report</b></p> <ul style="list-style-type: none"> <li>□ <b>Role and Scope:</b> Annual Monitoring Report to report on performance 1 April 2004 - 31 March 2005.</li> <li>□ <b>Chain of Conformity:</b> Not applicable, statutory requirement of Planning &amp; Compulsory Purchase Act 2004.</li> </ul>
<b>Timetable</b>	<p><b>Production Milestones:</b></p> <ul style="list-style-type: none"> <li>□ <b>Pre-production:</b> <ul style="list-style-type: none"> <li>□ Evidence gathering, initial work undertaken to review and capture data sets, consistent with draft ODPM indicators, July - November 2004.</li> <li>□ Preparation of 'pilot' AMR December 2004, for reporting period 1 April 2003 - 31 March 2004.</li> </ul> </li> <li>□ <b>Production:</b> <ul style="list-style-type: none"> <li>□ Review of data sets and gaps in context of Regional Spatial Strategy AMR and final AMR guidance/indicators.</li> <li>□ Involvement of key City Council stakeholders in development of indicators, consistent with Local Development Scheme targets and Policies, December 2004 - March 2005.</li> <li>□ Preparation of AMR April - October 2005.</li> <li>□ Report findings to Development Plan Panel and Executive Board as appropriate.</li> </ul> </li> <li>□ <b>Adoption, Monitoring &amp; Review:</b> <ul style="list-style-type: none"> <li>□ Submit AMR to Government Office Yorkshire &amp; the Humber December 2005.</li> <li>□ Monitor and review suite of indicators in accordance with Regional Spatial Strategy and Local Development Scheme requirements.</li> </ul> </li> </ul>
<b>Arrangements for Production</b>	<p><b>Production process and management arrangements:</b></p> <ul style="list-style-type: none"> <li>□ AMR production to be led by Planning &amp; Economic Policy with support from across the Development Department and other Council services as appropriate.</li> </ul>

# Appendix 1

## Schedule of 'Saved' Policies

The entire UDP Adopted 2001 is saved from commencement of the Planning & Compulsory Purchase Act 28/09/04 and it is intended that the Review Policies be saved on adoption. Over time, LDF documents will replace sections of the UDP. Where the preparation of replacement LDF documents has been agreed, these are listed with anticipated adoption/replacement dates. Those policy groupings in the table without replacement LDDs listed, will be saved beyond 3 years from Sept. 2004. A Programme for the replacement of these groupings will be prepared as the LDS is rolled forward, monitored and reviewed in December 2005.

### Key

#### *Ch = UDP Chapter*

These are for Volume I of the UDP unless stated otherwise.

#### *Policy grouping.*

These are thematic or spatial & reflect common sense divisions.

#### *List of Policies & Paras.*

These are for Volume I of the UDP unless stated otherwise.

#### *UDP Review Proposals.*

Identifies the policies/paras. subject to proposed changes.

Ch	Policy Grouping	List of Policies & Paras	UDP Review Proposals	LDF Replacement Documents	When
3	UDP Strategy	Strategic Goals SG1-4, Aims SA1-9 & Principles SP1-8		Core Strategy	July 08
4	Allocations & Use	Pols GP1-3, paras. 4.1.1-4.3.4			
4	Development Considerations	Pol GP5, paras. 4.3.5-4.3.7			
4	Carry Forward LP Policies	Pol GP6, Sec 4.4			
4	S106 Benefits	Pol GP7, Sec 4.5			
4	Enforcement	Pol GP8, Sec 4.6			
4	Monitoring & Review	Sec 4.7			
4	Community Involvement	Pol R4, Sec 4.8	Alts to Pol R4 & Sec 4.8	Statement of Community Involvement	Nov. 06
4	Sustainable Development		Pols GP9 & GP10, Sec 4.9	Sustainability Appraisal Guidance	tbc
5	Environment Aims	Pol SA1, paras. 5.1.1-6		Core Strategy	July 08
5	Greenspace	Pols SP1, N1-N11, Section 5.2			
5 & A3	Design & Conservation	Vol I - Pols N12-N22 & N28, paras. 5.3.1-10 & 5.3.16; Vol II - Pols BD2-15, BC1-9, Paras A3-1.1 - A3-2.8			
5 & A3	Landscape Design	Vol I - Pols N23-27, paras. 5.3.11-15; Vol II - Pols LD1-LD2, Sec A3.3			
5 & A4	Archaeology	Vol I - Pol N29; Vol II - Pols ARC1-8, Secs A4.1-3			
5	Environment Improvement	Pols N30-31, paras. 5.3.18-38			
5 & A5	Green Belt	Pols N32-34 - Pols GB1 - 26, Sec A5	Delete Pol N34 & related paras.		
5	Countryside	Pols SP2, N35-N37A & N40-44, Paras 5.5.1 - 5.5.9 & 5.5.12-22			
5	Flood Risk	Pols N38 & N39, paras. 5.5.10-11	Pols N38A, N38B, N39A & N39B, paras. 5.5.10a-f & paras. 5.5.11a-e		
5 & A6	Minerals	Vol I - Pols N45-N46B, Paras 5.5.23 - 5.5.31; Vol II - Pols GM1-8 & EM1-9, Sec A6			
5 & A7	Waste Disposal	Vol I - Pols N47-N48B, paras. 5.5.32-35; Vol II - Pols RECYC1-11 & WD1 - 12, Sec A7	Pol N47 & paras. 5.5.32-34, Pols WM1-18, Sec A7		
5 & A8	Nature Conservation	Vol I - Pols N49-53, Sec 5.6: Vol II - Sec A8	Sec A8		

Ch	Policy Grouping	List of Policies & Paras	UDP Review Proposals	LDF Replacement Documents	When
5	Renewable Energy	Pol 54 & Sec 5.7			
5	Air Quality		Sec 5.8		
6	Transport Strategy	SA2, SP4 & Policy T1	SA2, Policy T1	Core Strategy	July 08
6	New Developments	Policy T2 & T3			
6	Encouraging Sustainable Travel Modes		Policy T2B, T2C & T2D		
6 & A9c	Non-vehicular users	Policy T4 - T8	Policy T7 -7B (Policy T4 - T8, A9C)		
6	Public Transport Proposals	Policy T9 - T17	Policy T9, 10A, 14 - 17 (Policy T9 - T17)		
6	Highway Proposals	Policy T18 - T23	Policy T18 - 21 (Policy T18 - T23)		
6 & A9a & b	Car Parking	Policy T24 - 28	Policy T24a, A9A (Policy T24 - 28, A9A & B)		
6	Coach & Lorry Parking	Policy T29 & 29A	Policy T29A		
6	Leeds Bradford Airport	Policy T30	Policy T30		
6	Rail & Canal Freight	Policy T31			
7	Housing Strategy	SA3, SP3, SP5, Paras 7.1.1-7 & 7.4.1-12	Policy SA3 paras. 7.1.1-2	Core Strategy	July 08
7	Housing Land Requirement	Pols H1-H8, Sections 7.2, 7.3, 7.4.13-25 & 7.5	H1-H5, Sections 7.1 - 7.5		
7 & A5	Social Housing Needs	Vol I - Pols H9 - H14, Section 7.6; Vol II - Pol GB17, Paras A5.10.5-8	Alts to Paras 7.6.19-20		
7 & A10	Student Housing & HMOs	Vol I - Pols H15, H18 & H19, Sections 7.6.28-31 & 7.8.1-6; Vol II - HMO1, Paras A10.1-6	Pols H15, H15A & H18, Sections 7.6.28-31c & 7.8.1-6, Deletion of Pols H19 & HMO1		
7	Travellers & Show People	Pol H16			
7	Housing Renewal	Pol H17, paras. 7.7.1-5			
7 & A11	Residential Institutions	Vol I - Pols H20A & H20B, paras. 7.8.7-9; Vol II - Pols RI1-RI6, paras. A11.1.1-5.1			
7	Housing Development Standards	Pol H21, paras. 7.8.10-11			
8	Economic Strategy	Policy SA4, SP6, E1 & E2		Core Strategy	July 08
8	Background (scale of employment change & emp. land to be provided)	Section 8.2 - 8.3			
8	Employment Allocation	Policy E3 & E4			
8	Windfall Sites	Policy E5			
8	Physical Constraints	Policy E6			
8	Non Employment uses on Employment sites	Policy E7	Policy E7		
8	Key Employment Sites	Policy E8			
8	Transport Related Development	Policy E10			
8	B1 Business Uses	Policy E12 - E19			
8	Science Park	E21			

Ch	Policy Grouping	List of Policies & Paras	UDP Review Proposals	LDF Replacement Documents	When
8	Economic Priority Areas	Policy E22 - E22A			
8	Rural Economy	Para 8.8.1			
9	Town Centres Focus of Development	SA 5 and SP7		Core Strategy	July 08
9	City Centre regional centre	S1		Core Strategy	July 08
9 & A12	Town Centres	Vol I - S2, S3, S3a and S4; Vol II - SF1A-SF10B and SF11-SF12 and SF13-15			
9	Out-of-centre controls	S5 and S9			
9	Food shopping need	S6			
9	Local Centres and neighbourhood shopping	S8 and S9			
10	Leisure Strategic Aim	SA6		Core Strategy	July 08
10	Leisure facilities	LT1 and LT2			
10	Tourism	LT3-LT5B			
10	Waterways	LT6-LT6B			
10 & A13	Hotels	Vol I - LT7; Vol II - HO1 - 9			
11	Urban Regeneration	Pols R1-R3, secs 11.2 & 11.3		Core Strategy	July 08
	Area Initiatives & Regeneration		Pols R1-R4, Ch11	Core Strategy	July 08
12	Access for All Aims	Pols SA8 & A1, Secs 12.1-3		Core Strategy	July 08
12	New Schools	Pol A2, sec 12.4			
12	Health Facilities	Sec 12.5			
12	Community Uses	Sec 12.6			
12	Safety & Security	Pol A4, sec 12.7			
13	City Centre Aims	Pol SA9, sec 13.1		Core Strategy	July 08
13	City Centre	Pols SP8 & CC1-30, secs 13.2-7	Alts to various paras.	City Centre Action Plan	Dec 07
14	Aireborough, Horsforth & Bramhope	Site allocations & proposals	Various alterations		
15	East Leeds	Site allocations & proposals	Various alterations	Parts of Ch 15: EASEL Action Plan & Aire Valley Action Plan	Mar 07 & Dec 06
16	Garforth	Site allocations & proposals	Various alterations		
17	Morley	Site allocations & proposals	Various alterations		
18	North Leeds	Site allocations & proposals	Various alterations		
19	Otley & Mid Wharfedale	Site allocations & proposals	Various alterations		
20	Pudsey	Site allocations & proposals	Various alterations		
21	Rothwell	Site allocations & proposals	Various alterations		
22	South Leeds	Site allocations & proposals	Various alterations	Parts of Ch 22: Aire Valley Action Plan	Dec 06
23	West Leeds	Site allocations & proposals	Various alterations	Parts of Ch 23: West Leeds Action Plan	

# Appendix 2

## Schedule of Retained Supplementary and 'Other' Guidance

### **Other Guidance**

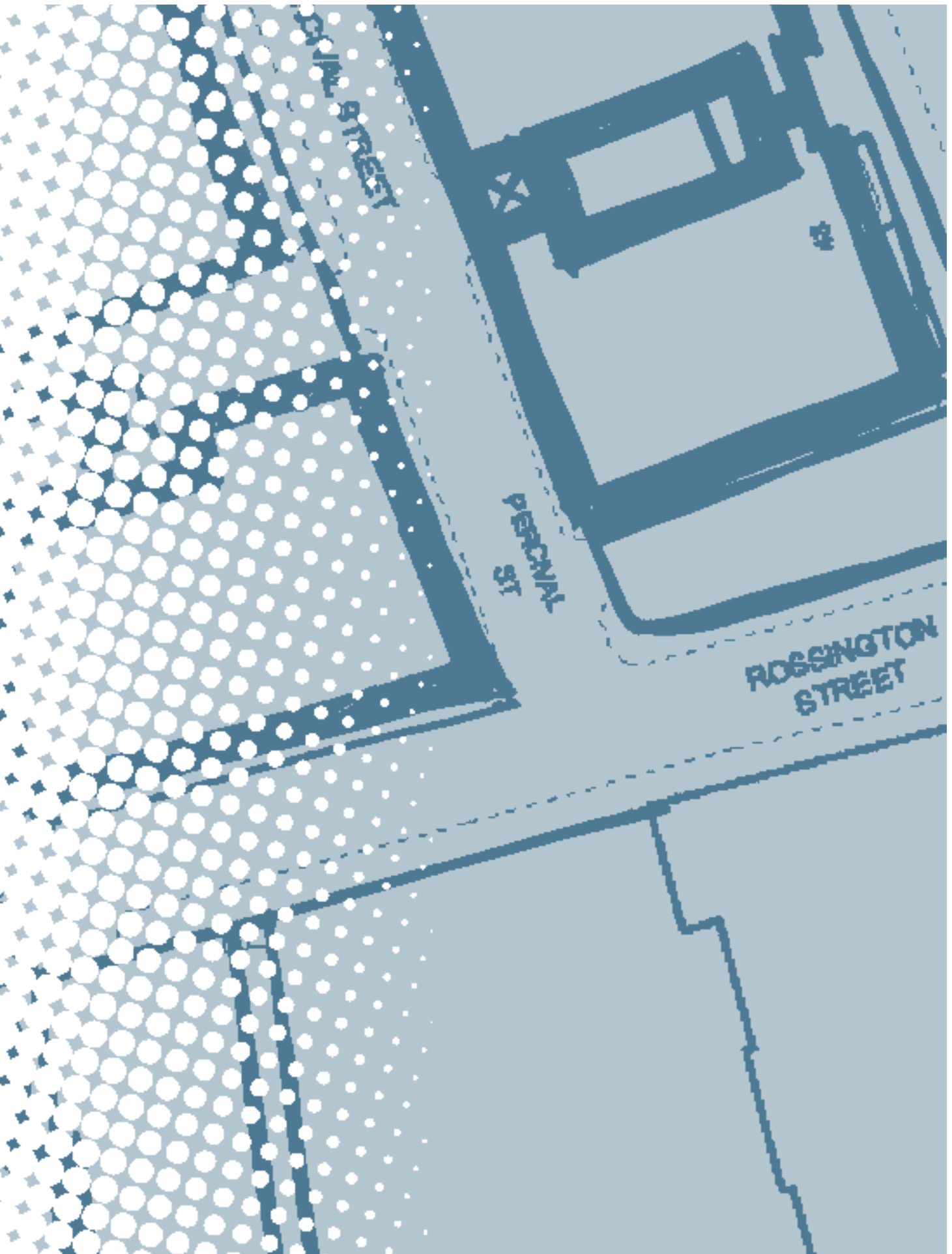
In addition to the *Supplementary Planning Guidance* opposite, documents 'saved' under the transitional arrangements, the City Council also wish to retain a series of 'best practice' and guidance notes. Whilst it is recognised that such documents have no formal status as part of the Local Development Framework, the City Council considers that such documents provide a detail source of information on a range of planning matters for its many customers. The date in brackets indicated when the guidance was 'adopted' by the City Council.

## Supplementary Planning Guidance

<b>1</b>	PPG6 - Town Centres & Retail Development (7 October 1996), to be reviewed following adoption of Core Strategy.
<b>2</b>	Leisure Developments & Other Key Town Centre Uses (13 October 1997), to be reviewed following adoption of Core Strategy.
<b>3</b>	Sustainable Development Design Guide (30 March 1998), to be replaced by Sustainable Design and Construction Supplementary Planning Document once adopted.
<b>4</b>	Greenspace Relating to New Housing Development (6 July 1998).
<b>5</b>	Guidelines for Assessing Developer Contributions to Leeds Supertram (6 July 1998), to be replaced by Public Transport - Improvements - Developer Contributions, Supplementary Planning Document once adopted.
<b>6</b>	Holbeck Urban Village Planning Framework (29 March 1999), to be replaced by an updated following consultation.
<b>7</b>	Development of Self - Contained Flats (4 May 1999).
<b>8</b>	Leeds City Centre Urban Design Strategy (18 September 2000).
<b>9</b>	Section 106 Contributions for School Provision (1 February 2001).
<b>10</b>	Bramhope Village Design Statement (12 October 2001).
<b>11</b>	Telecommunication Equipment (2001).
<b>12</b>	Leeds Supertram Design Standards Guide (March 2002).
<b>13</b>	Bardsey Village Design Statement (28 May 2002).
<b>14</b>	East Keswick Village Design Statement (June 2002).
<b>15</b>	Pool Village Design Statement.
<b>16</b>	Thorp Arch Village Design Statement.
<b>17</b>	Leeds Waterfront Strategy 2002 (10 July 2002).
<b>18</b>	Neighbourhoods for Living (December 2003).
<b>19</b>	Revised Affordable Housing Policy Guidance (February 2003).
<b>20</b>	Greening the Built Edge (Adopted UDP Policy N34) (2004).
<b>21</b>	Sustainable Urban Drainage (June 2004).
<b>22</b>	Otley Conservation Area Appraisal (June 2004).
<b>23</b>	Chapelton Conservation Area Appraisal (2003).
<b>24</b>	Roundhay Conservation Area Appraisal (September 2004).
<b>25</b>	Beeston & Holbeck Planning Framework (January 2005)
<b>26</b>	Far Headingley, Weetwood and West Park Neighbourhood Design Statement (February 2005)
<b>27</b>	Hawthornthwaite Village Design Statement (February 2005)
<b>28</b>	Adel Village Design Statement (March 2005)

## Other Guidance

	<b>Conservation Design Guides</b>
<b>1</b>	Caring for Ancient Monuments.
<b>2</b>	Caring for Conservation Areas.
<b>3</b>	Ancient Monuments in Leeds (October 1995).
<b>4</b>	Listed Buildings in Leeds (February 2003).
<b>5</b>	Historic Buildings in Leeds - Understanding Listing.
<b>6</b>	A guide to the Preparation and Usage of Stone (1977).
<b>7</b>	Use of Magnesian Limestone as a Building Material (September 1978).
	<b>Design Guides</b>
<b>8</b>	Farm Buildings (December 1992).
<b>9</b>	Site Development Guide (March 1995).
<b>10</b>	Design Aid - Shops & Shopfronts (December 1992).
<b>11</b>	Design Aid - Shop Front Security (December 1992).
<b>12</b>	Urban Design Content of Submissions for Planning Applications (September 2000).
	<b>Landscape Design Guides</b>
<b>13</b>	Development Site Tree Surveys (September 2000).
<b>14</b>	List of Landscape Consultants (December 1995)
<b>15</b>	Nature Conservation (March 1999).
<b>16</b>	Tree Protection on Development or Demolition Sites (September 2000).
<b>17</b>	A Landscape Submission Checklist for Planning Applicants Application Forms (September 2000).
<b>18</b>	Protected Trees and Buildings: Guidance on Subsidence Investigations.
<b>19</b>	Woodland Management Plans Required by Planning Condition.
	<b>Minerals Design Guides</b>
<b>20</b>	Access to Construction (June 1994).
<b>21</b>	Aftercare Schemes (June 1994).
<b>22</b>	Choosing the Right Trees (June 1994).
<b>23</b>	All Muck and Bullets (September 1998).
<b>24</b>	Development of Contaminated Sites (June 2000).
	<b>Town Centre Strategies</b>
<b>25</b>	Towards a Plan of Action for Morley Town Centre (1997)
<b>26</b>	Morley Town Centre Action Plan (September 1999).
<b>27</b>	Towards a Plan of Action for Otley Town Centre (1997).
<b>28</b>	Otley Town Centre Action Plan (2000).
<b>29</b>	Towards a Strategy for Wetherby (November 2000).
<b>30</b>	Wetherby Town Centre Action Plan (September 2001).
<b>31</b>	Towards a Plan of Action for Armley Town Centre (October 1998).
<b>32</b>	Armley Town Centre Action Plan (January 2004).
<b>33</b>	Towards a Town Centre Strategy for Pudsey
<b>34</b>	Pudsey Town Centre Action Plan (March 2004).





## Contact Details

**Write to:** Liz Hardwick  
Administration & Information Officer  
Leeds City Council  
Development Department  
Thoresby House, Level 3  
2 Rossington Street  
LEEDS LS2 8HD

**Telephone:** 0113 24 78075

**Email:** [ldf@leeds.gov.uk](mailto:ldf@leeds.gov.uk)

**Web:** [www.leeds.gov.uk/ldf](http://www.leeds.gov.uk/ldf)

# Leeds Local Development Scheme

## Leeds Local Development Framework

Planning for Sustainable Communities  
June 2005